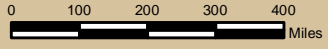


POP10_SQMI

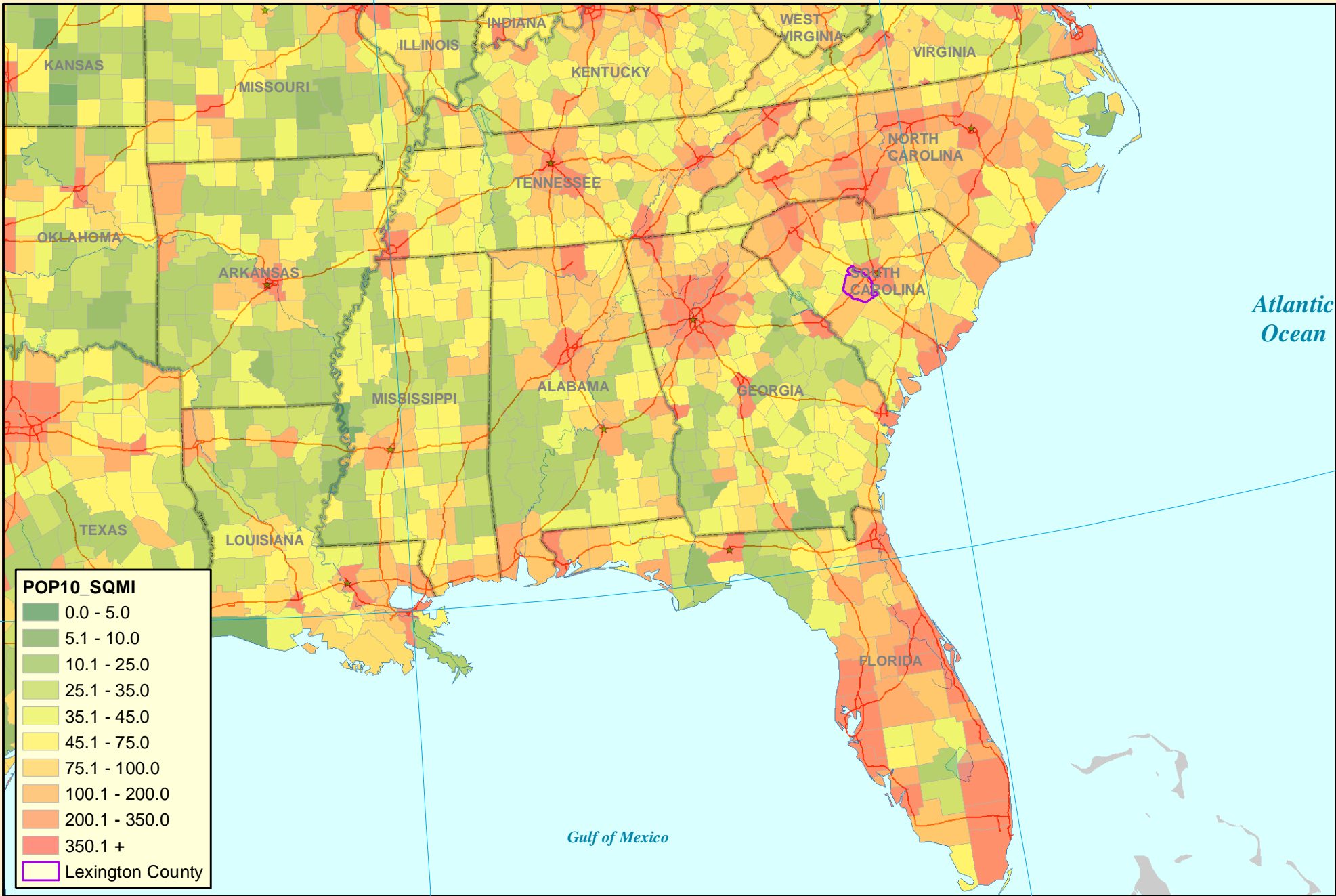
0.0 - 5.0
5.1 - 10.0
10.1 - 25.0
25.1 - 35.0
35.1 - 45.0
45.1 - 75.0
75.1 - 100.0
100.1 - 200.0
200.1 - 350.0
350.1 +
Lexington County

2010 United States Population Per Square Mile

Albers Projection
 Central Meridian: -96
 1st Std Parallel: 20
 2nd Std Parallel: 60
 Latitude of Origin: 40

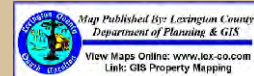


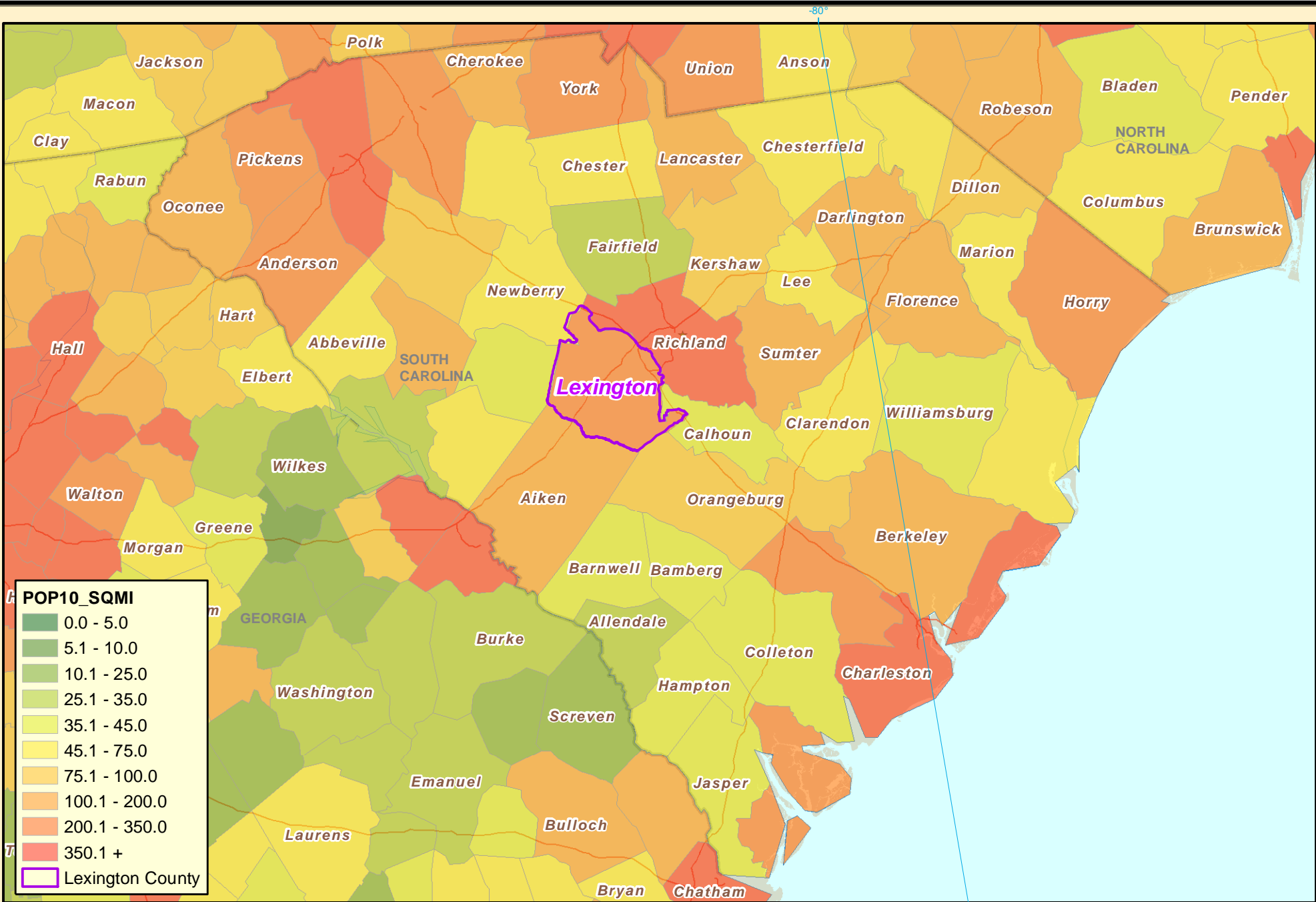
Map Published by: Lexington County
 Department of Planning & GIS
 View Maps Online: www.lcx-co.com
 Link: GIS Property Mapping



2010 United States Population Per Square Mile

Albers Projection
 Central Meridian: -96
 1st Std Parallel: 20
 2nd Std Parallel: 60
 Latitude of Origin: 40

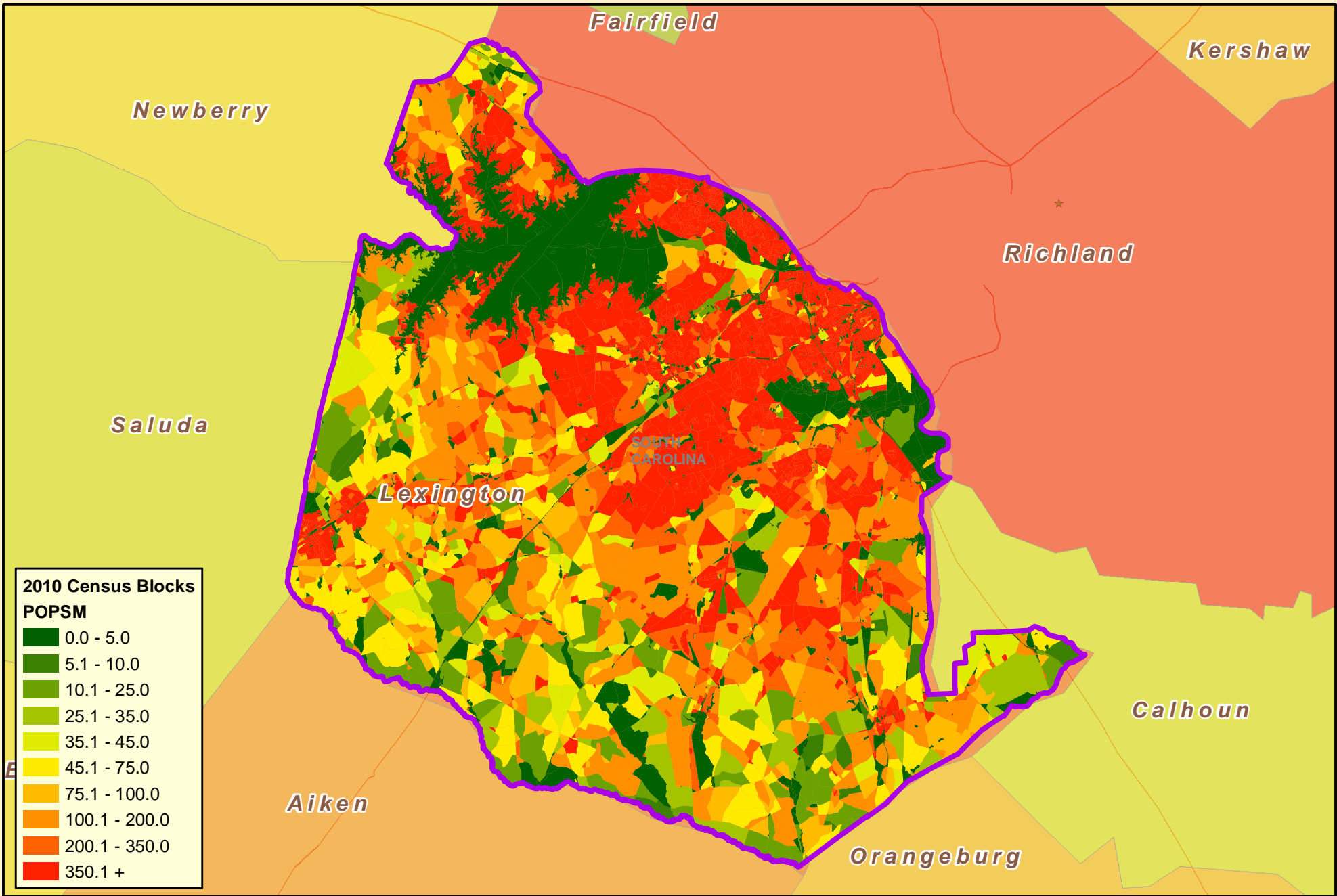




2010 South Carolina Population Per Square Mile

Albers Projection
 Central Meridian: -96
 1st Std Parallel: 20
 2nd Std Parallel: 60
 Latitude of Origin: 40



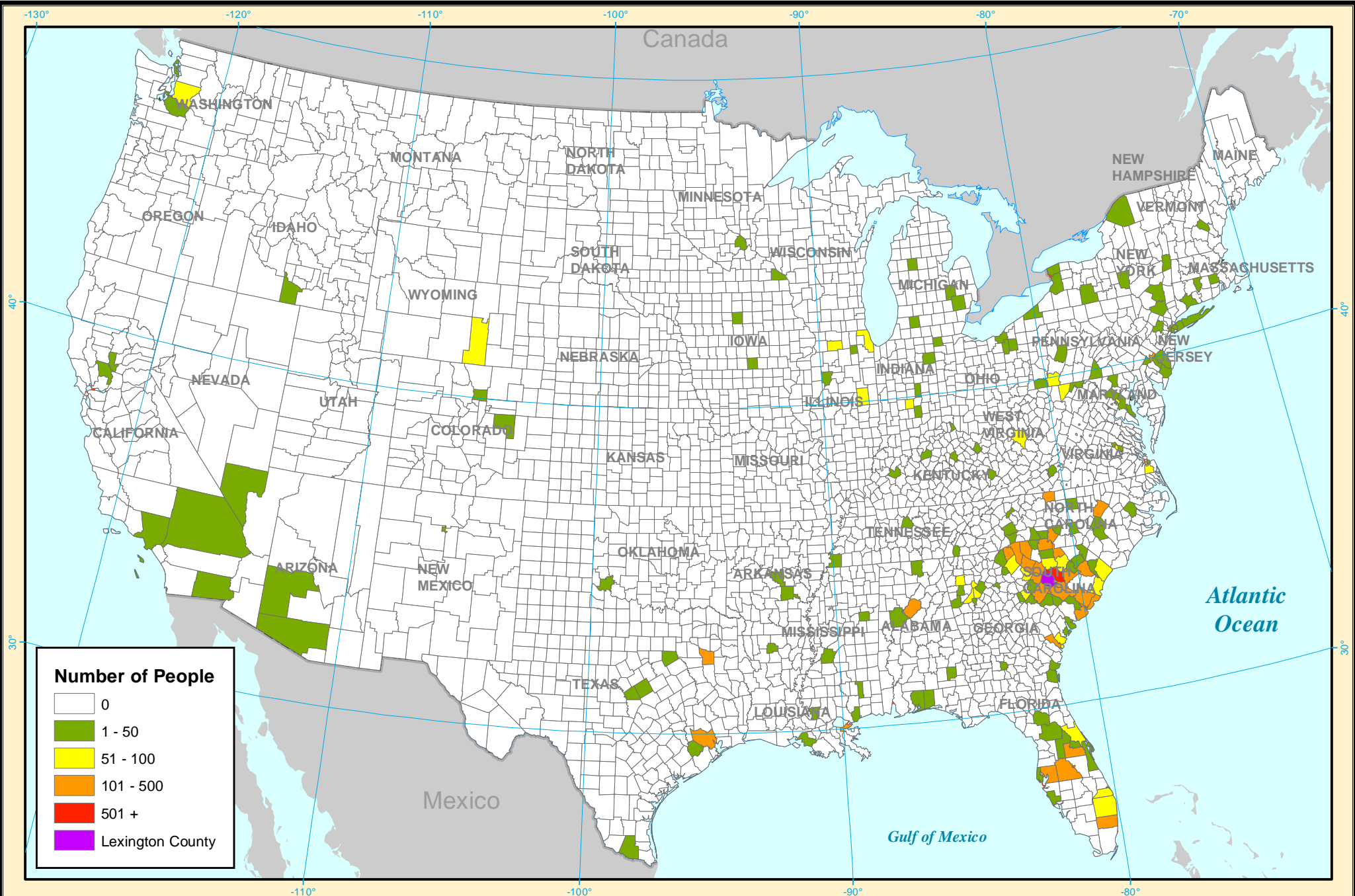


2010 Lexington County Population Per Square Mile

Albers Projection
 Central Meridian: -96
 1st Std Parallel: 20
 2nd Std Parallel: 60
 Latitude of Origin: 40




Map Published By: Lexington County
 Department of Planning & GIS
 View Maps Online: www.lex-co.com
 Link: GIS Property Mapping

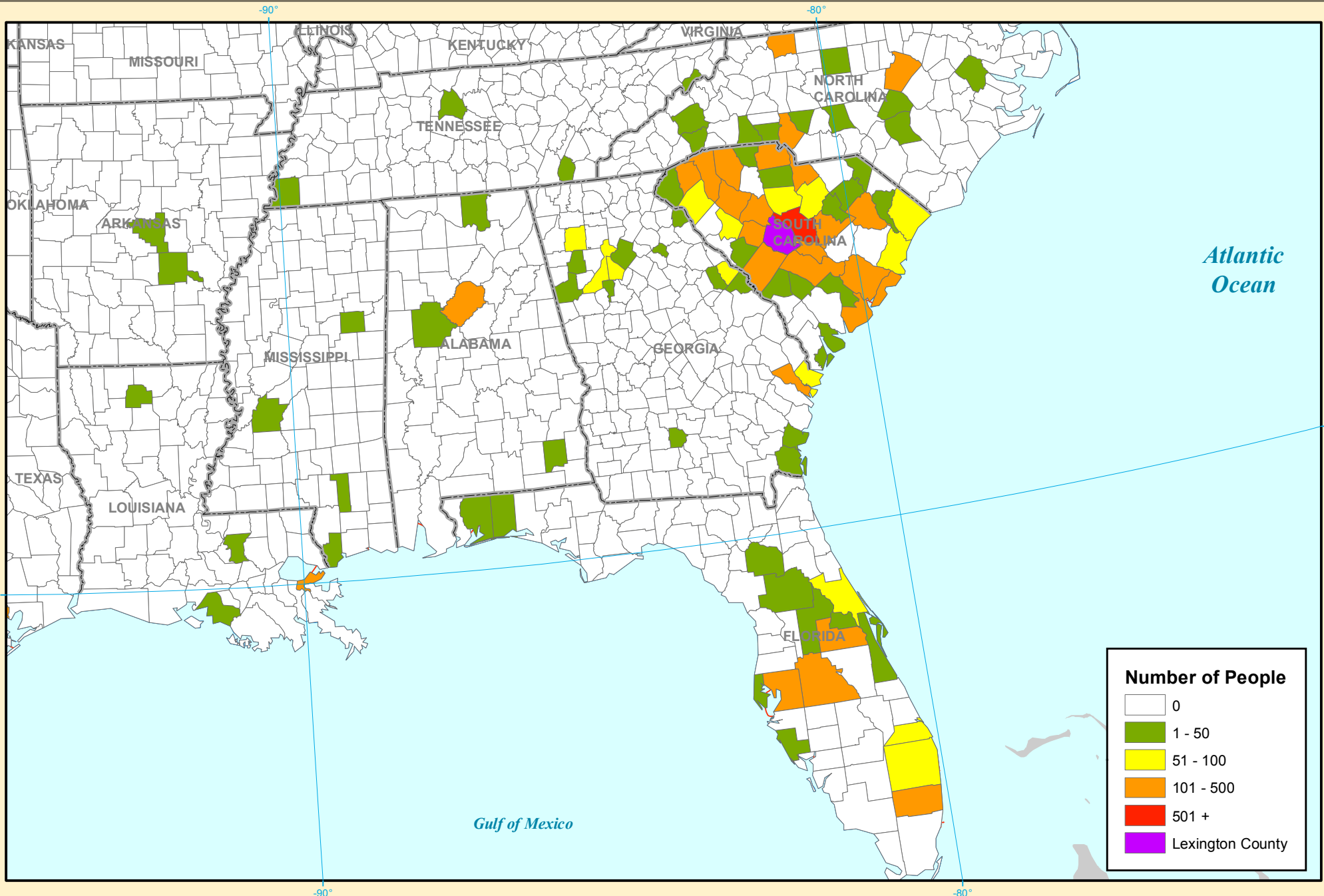


Migration From United States Into Lexington County 2001-2009

Albers Projection
 Central Meridian: -96
 1st Std Parallel: 20
 2nd Std Parallel: 60
 Latitude of Origin: 40

Map Published By: Lexington County
 Department of Planning & GIS
 View Maps Online: www.lex-co.com
 Link: GIS Property Mapping

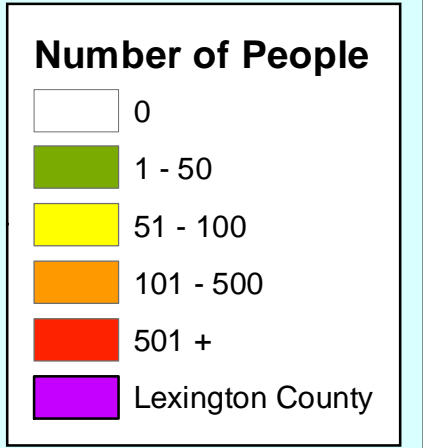
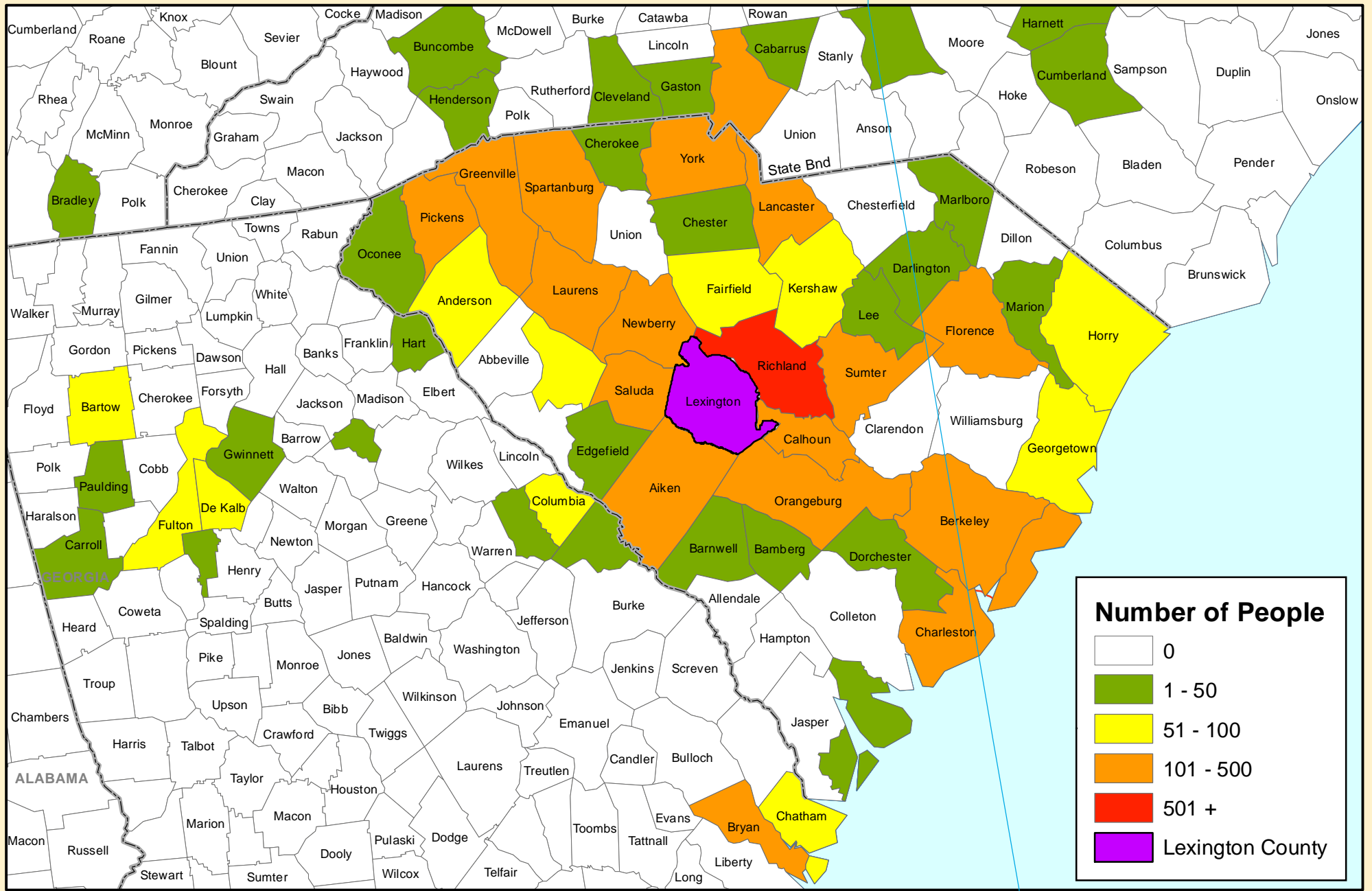


Migration From United States Into Lexington County 2001-2009

Albers Projection
 Central Meridian: -96
 1st Std Parallel: 20
 2nd Std Parallel: 60
 Latitude of Origin: 40



Map Published By: Lexington County
 Department of Planning & GIS
 View Maps Online: www.lex-co.com
 Link: G18 Property Mapping



Migration From United States Into Lexington County 2001-2009

Albers Projection
 Central Meridian: -96
 1st Std Parallel: 20
 2nd Std Parallel: 60
 Latitude of Origin: 40

