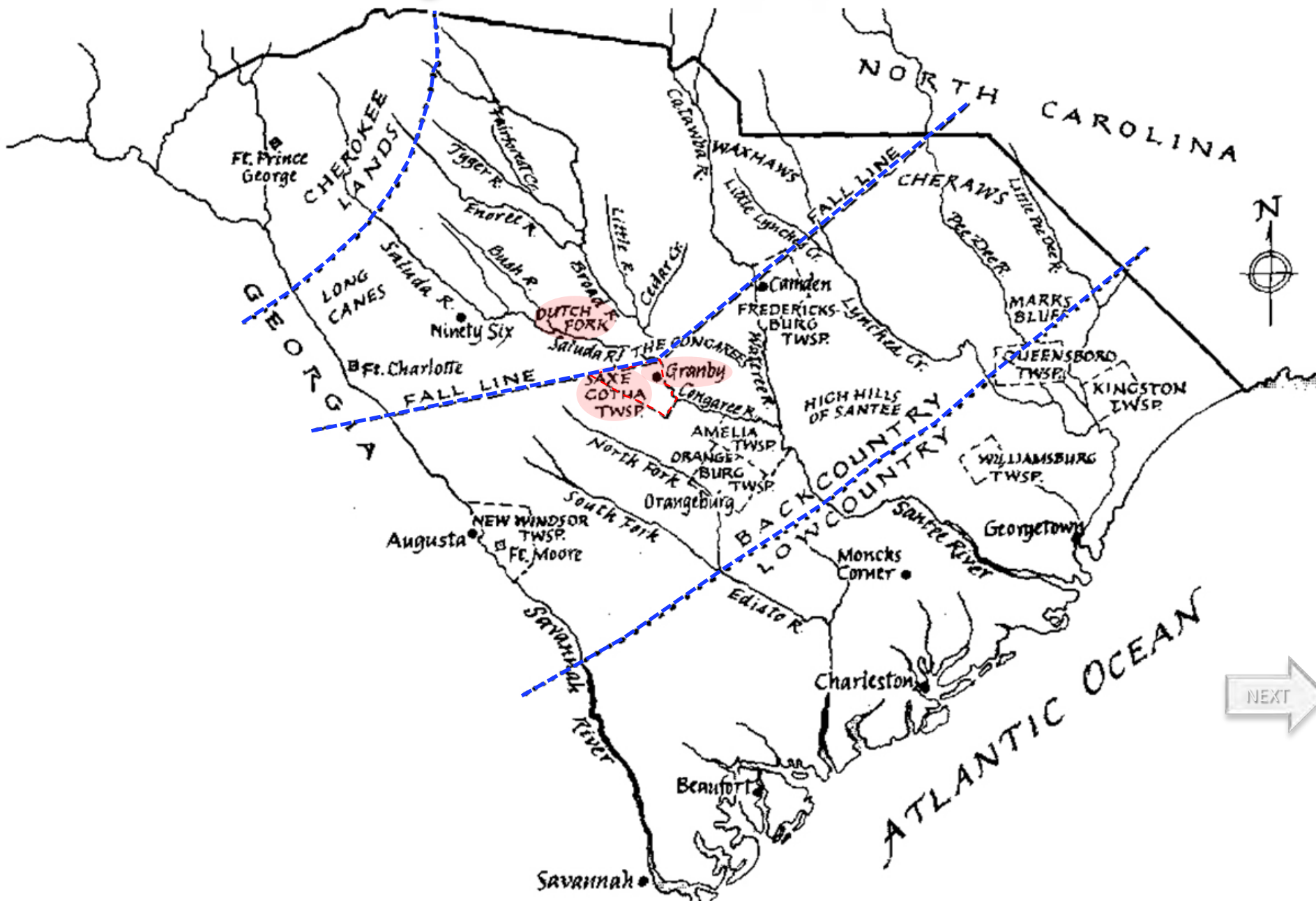
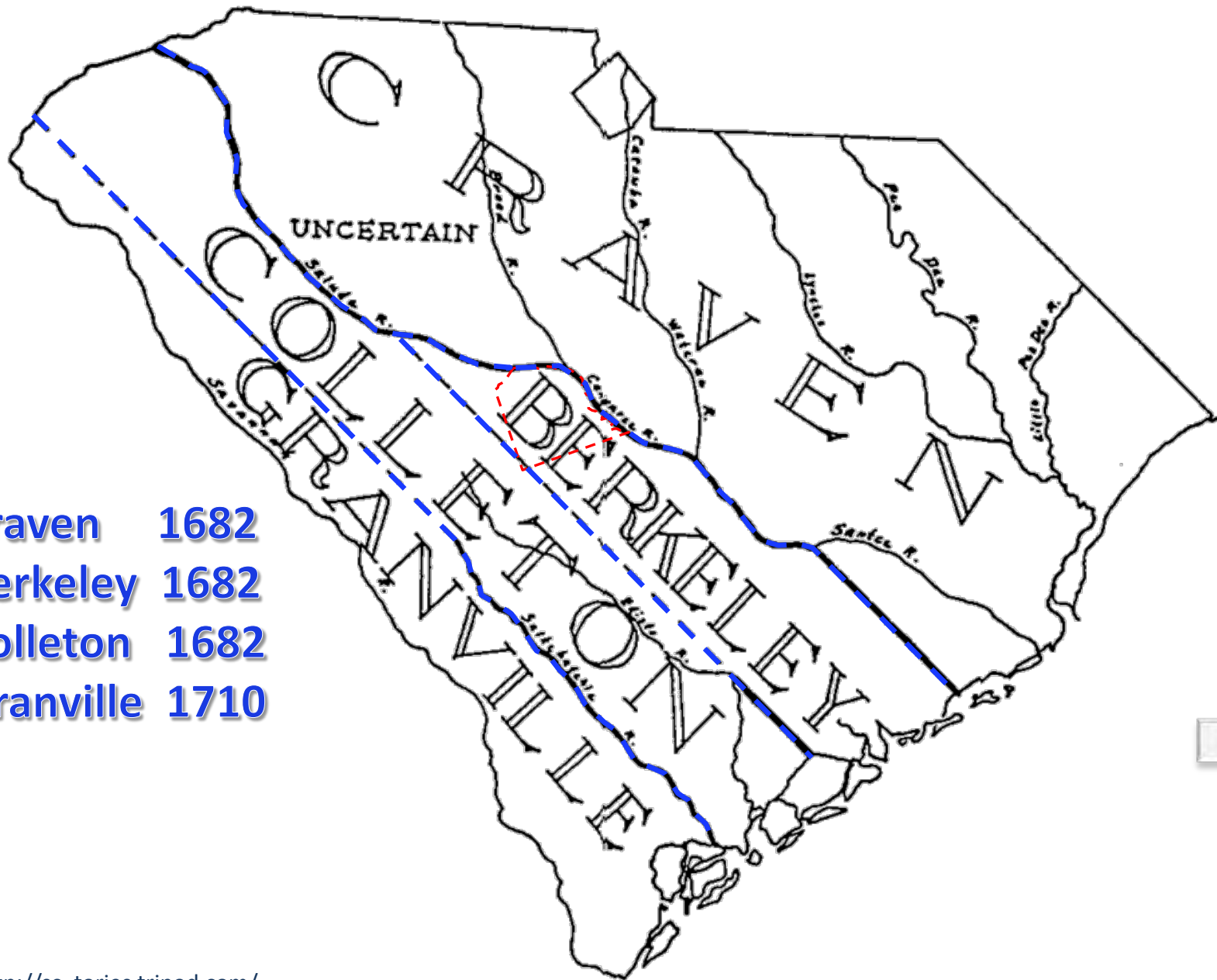


South Carolina Regions at the Eve of the American Revolution



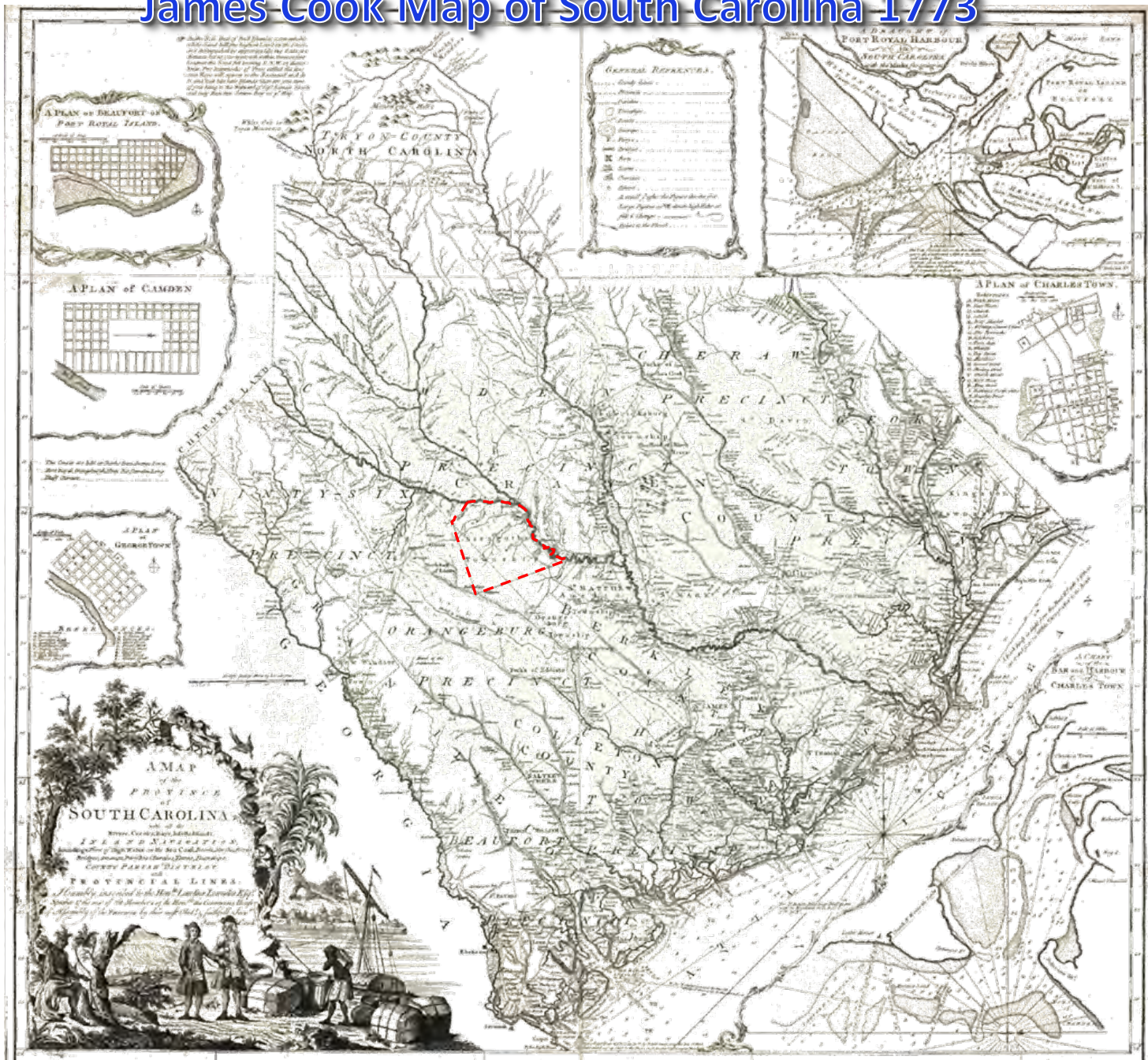
South Carolina County Boundaries 1682 - 1785



- Craven 1682
- Berkeley 1682
- Colleton 1682
- Granville 1710



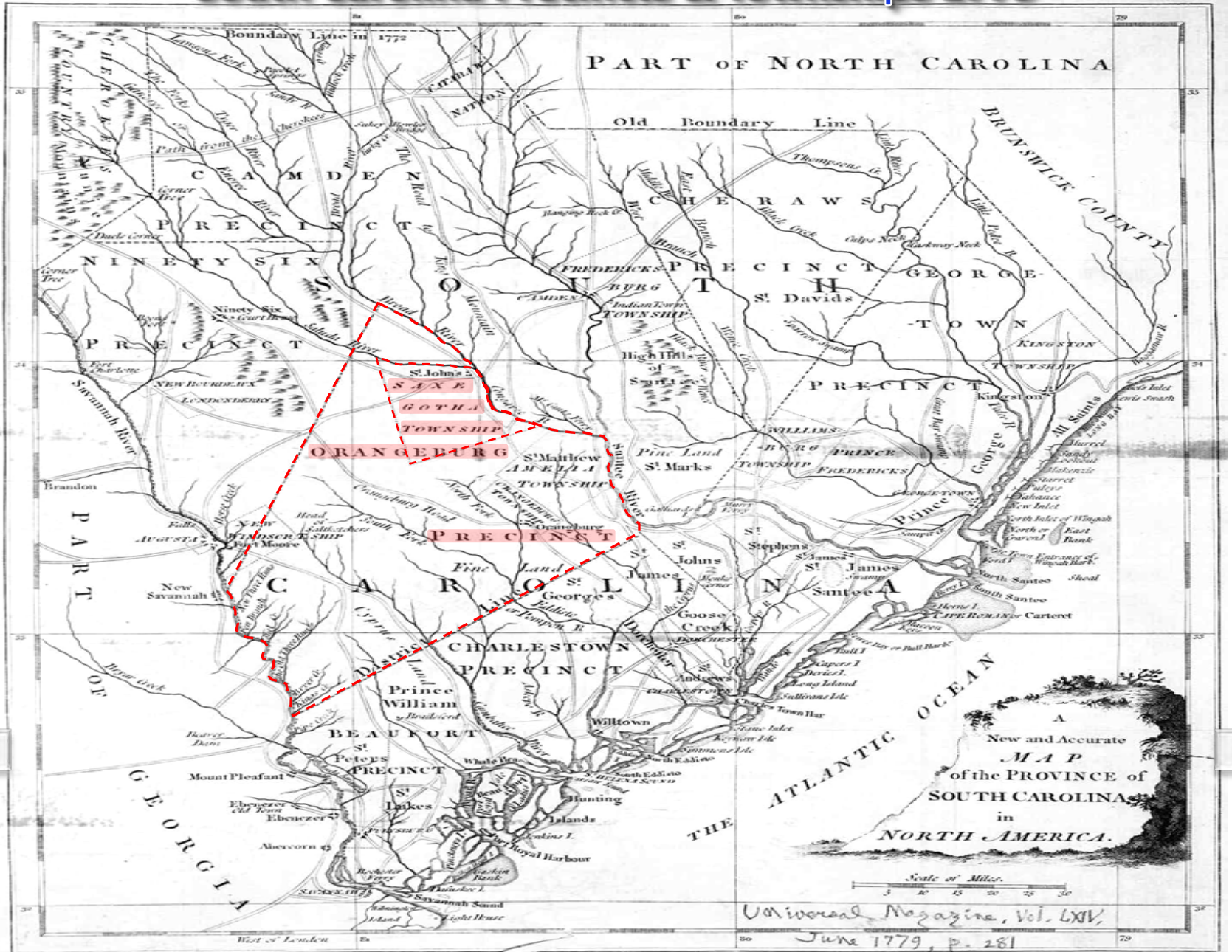
James Cook Map of South Carolina 1773



← BACK

NEXT →

South Carolina Precincts & Townships 1779



← BACK

NEXT →

Samuel Lewis Map of South Carolina 1812



← BACK

NEXT →

Robert Mills Atlas of South Carolina 1825

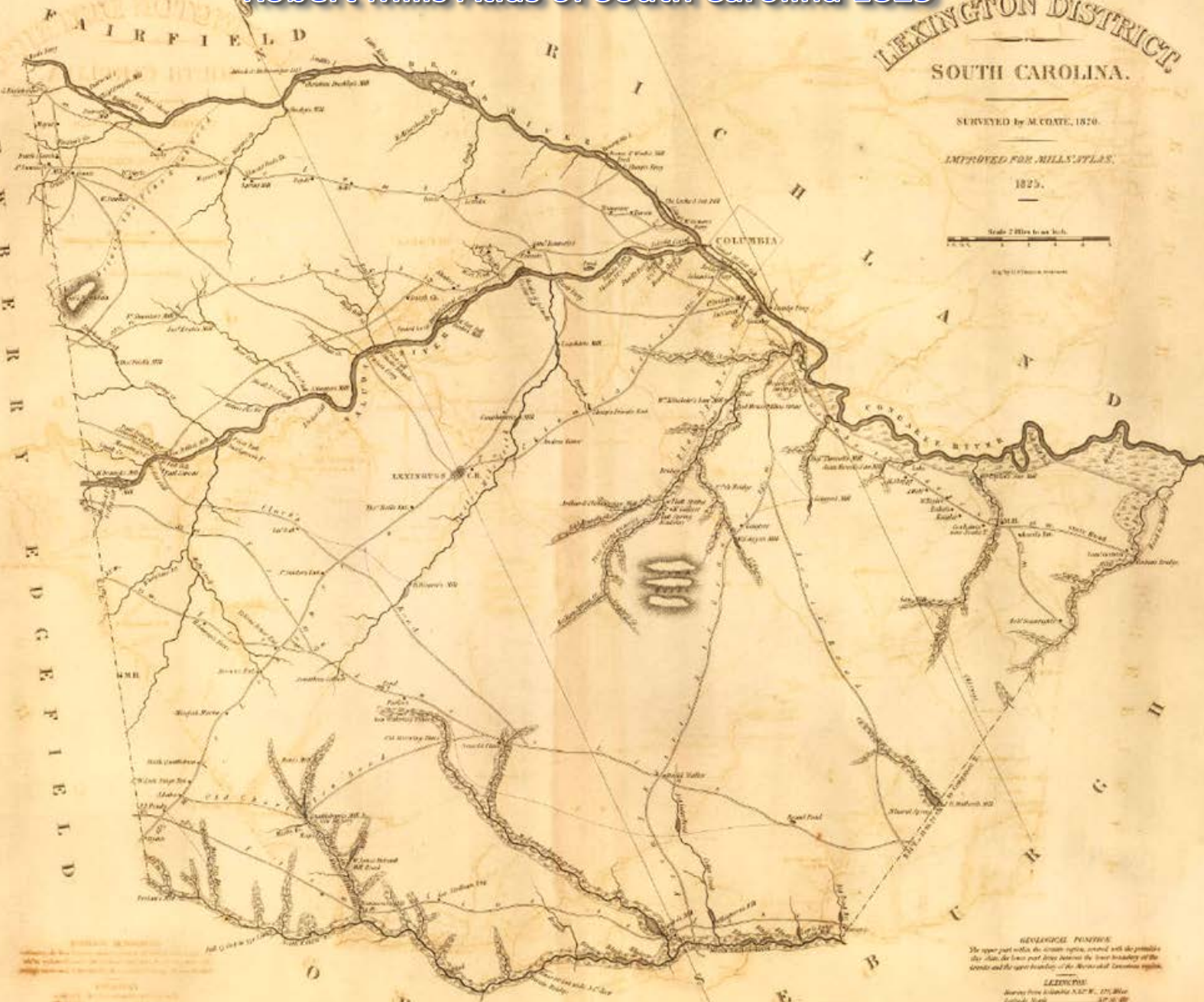
LEXINGTON DISTRICT SOUTH CAROLINA.

SURVEYED by M. COLE, 1820.
IMPROVED FOR MILLS' ATLAS,
1825.

Scale 2 Miles to an Inch.

Original Survey by M. Cole

GEOLOGICAL POSITIONS
The upper part within the stream system, marked with the peninsula
the plain the lower part being between the lower boundary of the
woods and the upper boundary of the marshes and lowlands, is
LETTICIOUS
Survey from Washington N. 27° E. 175 Miles
Latitude 34° 30' N. 37° 30' W.
Longitude 81° 30' W.



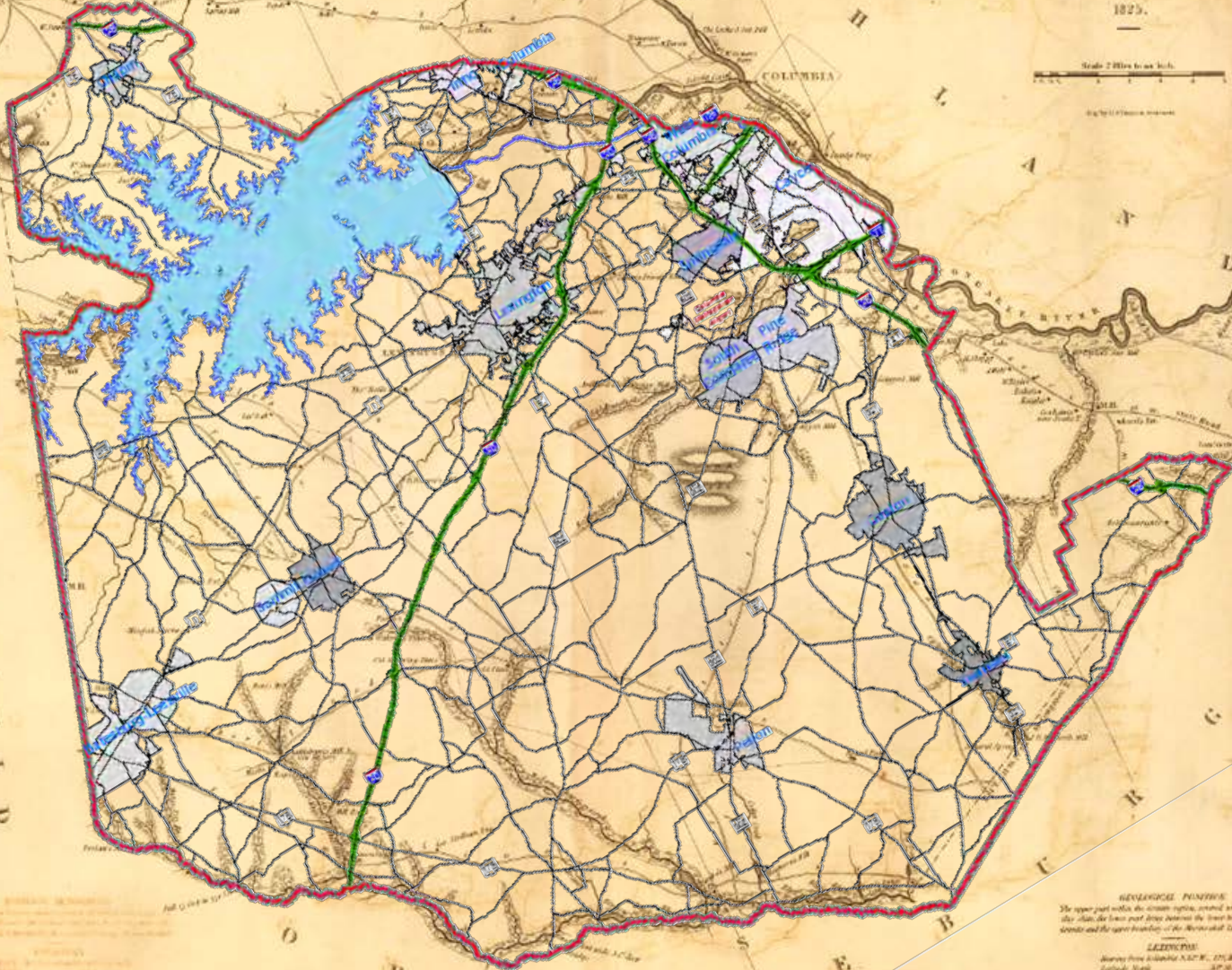
Robert Mills Atlas of South Carolina 1825

With Current Lexington County Boundary

LEXINGTON DISTRICT
SOUTH CAROLINA.

SURVEYED by M. COLE, 1820.
IMPROVED FOR MILLS' ATLAS,
1825.

Scale 2 Miles to an Inch.



← BACK

NEXT →

GEOLOGICAL POSITION:
The upper part within the orange region, covered with the granite
the blue the lower part being composed of the lower boundary of the
sandstone and the upper boundary of the Miocene and Cretaceous epochs.

LEXINGTON:
Surveyed from a meridian N. 87° E., 171 Miles
Latitude 34° 30' N.
Longitude 81° 15' W.

History of the Formation of Present Day Lexington County

Chronology

[1. Lexington, 12th March, 1785](#)

Lexington created within Orangeburg District (overlapped part of Newberry, creating disputed jurisdiction with Newberry not settled until 29 January 1788). (S.C. Statutes, 4:661-666; S.C. Acts 1797, pp. 144-145)

[2. Lexington, 29th February, 1788](#)

Lexington gained undisputed jurisdiction of 12 March 1785 overlap with Newberry. (S.C. Statutes, 7:248)

[3. Lexington, 19th February, 1791](#)

Lexington effectively eliminated as county administrative unit by reform of judicial district system, but unlike the other counties eliminated by this change Lexington did not become entirely defunct. (S.C. Acts 1791, Jan. sess., pp. 20-21, 28-29)

[4. Lexington, 17th December, 1803](#) [\(4A-4E. Lexington District, 1804-1868, See next page for index details\)](#)

Lexington (Saxe Gotha election district) lost to Orange Parish and lost territory in boundary adjustment with St. Matthew Parish, as a result of omnibus act to delineate boundaries of counties, election districts, and parishes. (S.C. Acts 1803, p. 38)

[5. Lexington, 16th April, 1868](#)

Lexington District eliminated when new state constitution abolished all judicial districts. Lexington County continued, with boundaries matching those of Lexington District on 20 December 1832. Lexington assumed all functions of local government from both judicial districts and parishes. (Swindler, 8:497)

[6. Lexington, 10th March, 1871](#)

Lexington lost to creation of Aiken. (S.C. Acts 1871, no. 420, sec. 1/p. 695)

[7. Lexington, 19th February, 1901](#)

Lexington lost to Newberry. (S.C. Acts 1901, no. 380, sec. 1/pp. 661-662)

[8. Lexington, 14th February, 1908](#)

Lexington lost to creation of Calhoun. (S.C. Acts 1908, no. 567, sec. 1/pp. 1279-1281)

[9. Lexington, 9th February, 1912](#)

Lexington lost to Richland. (S.C. Acts 1912, no. 457, sec. 1/pp. 821-823)

[10. Lexington, 13th February, 1913](#)

Lexington lost to Richland. (S.C. Acts 1913, no. 68, sec. 1/pp. 107-108)

[11. Lexington, 29th March, 1920](#)

Lexington lost to Newberry. (S.C. Acts 1920, no. 547, sec. 1/pp. 976-978)

[12. Lexington, 11th March, 1922](#)

Lexington lost to Richland. (S.C. Acts 1922, no. 551, sec. 1/pp. 977-978)

[13. Lexington, 12th May, 1953](#)

Lexington lost to Newberry. (S.C. Acts 1953, no. 323, sec. 1/pp. 416-417)

[14. Lexington, 14th July, 1969](#)

Boundary between Lexington and Richland redefined [no change]. (S.C. Acts 1969, no. 465, secs. 1-3/pp. 819-822)

A grey arrow pointing to the left with the word "BACK" written inside it.

BACK

Source: Atlas of Historical County Boundaries [The Newberry Library Dr. William M. Scholl Center for American History and Culture](#)

Web Link: <http://publications.newberry.org/ahcbp/project.html>

Map Eve of the Revolution Source: Phil Norfleet's : [South Carolina Loyalists and Rebels](#) Maps Page

Source Precincts & Townships 1779 Map: http://www.usgwarchives.org/sc/maps/sc_1779.jpg

Lexington District 1804 - 1868

Chronology

[4A. Lexington District, 21st December, 1804](#)

Lexington District created from Orangeburg District (with altered 1803 LEXINGTON County boundaries). Between 1 January 1800 and 16 April 1868, judicial districts were the principal administrative subdivisions of the state, while counties survived mostly as geographical references. (S.C. Acts 1804, Nov. sess., p. 16)

[4B. Lexington District, 19th December, 1805](#)

Lexington District lost to Orange Parish, as a result of omnibus act to delineate boundaries of counties, election districts, and parishes. (S.C. Acts 1805, p. 94)

4-X. Lexington District, 19th December, 1807 (No Map)

Lexington District gained from Non-District Area; Non-District Area eliminated. (S.C. Acts 1807, p. 56)

[4C. Lexington District, 20th December, 1832](#)

Lexington District gained from Orangeburg District. (S.C. Acts 1832, Nov. sess., ch. 15, sec. 1/p. 19)

[4D. Lexington District/County, 16th April, 1868](#)

Lexington District eliminated, became Lexington County when new state constitution abolished all judicial districts. LEXINGTON County assumed all functions of local government from both judicial districts and parishes. (Swindler, 8:497)

Source: Atlas of Historical County Boundaries

[The Newberry Library](#)

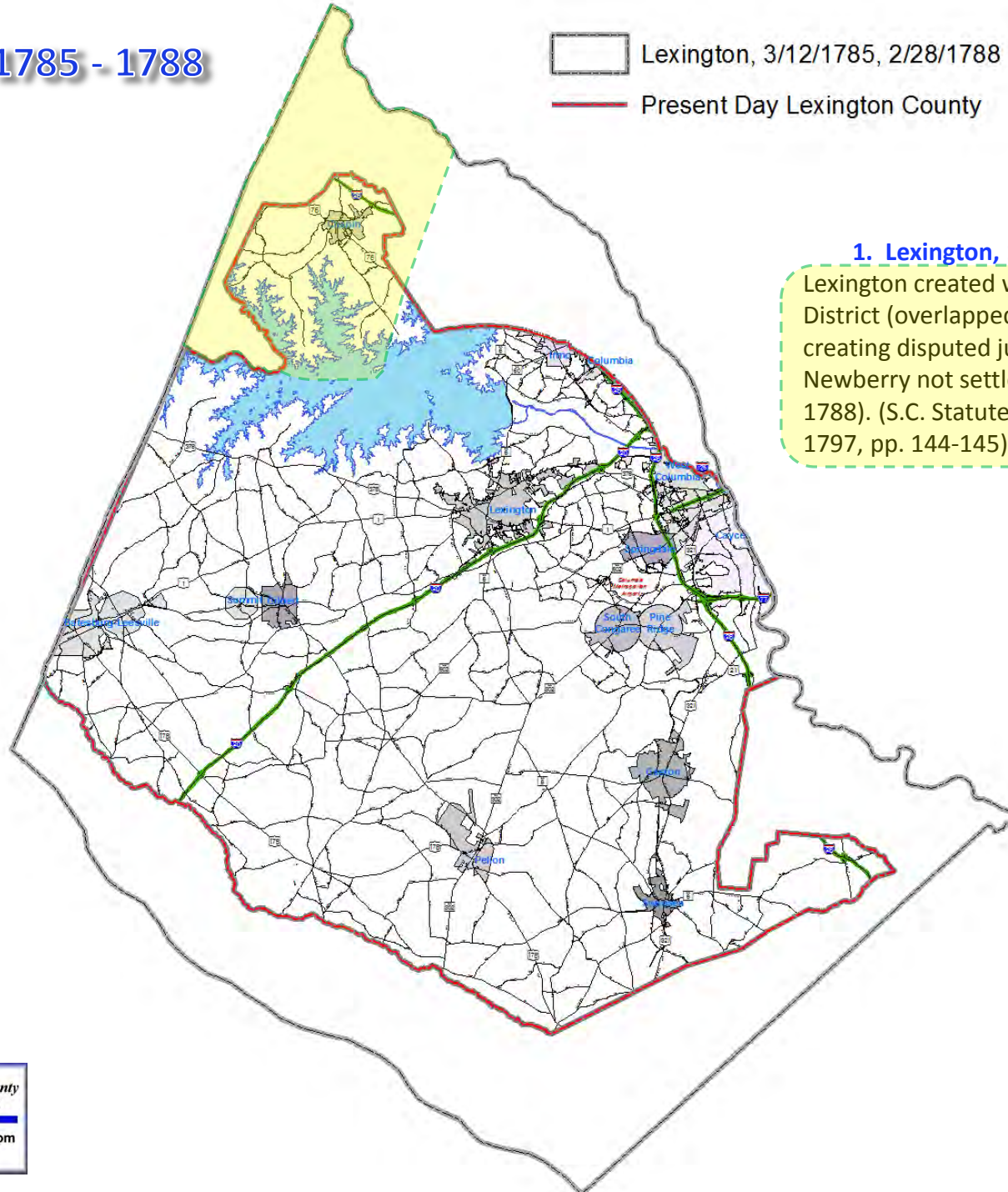
[Dr. William M. Scholl Center for American History and Culture](#)

A grey, 3D-style arrow pointing to the left, containing the word "BACK" in capital letters.A grey, 3D-style arrow pointing to the right, containing the word "NEXT" in capital letters.

LEXINGTON 1785 - 1788

Lexington, 3/12/1785, 2/28/1788

Present Day Lexington County



1. Lexington, 12th March, 1785

Lexington created within Orangeburg District (overlapped part of Newberry, creating disputed jurisdiction with Newberry not settled until 29 January 1788). (S.C. Statutes, 4:661-666; S.C. Acts 1797, pp. 144-145)

← BACK

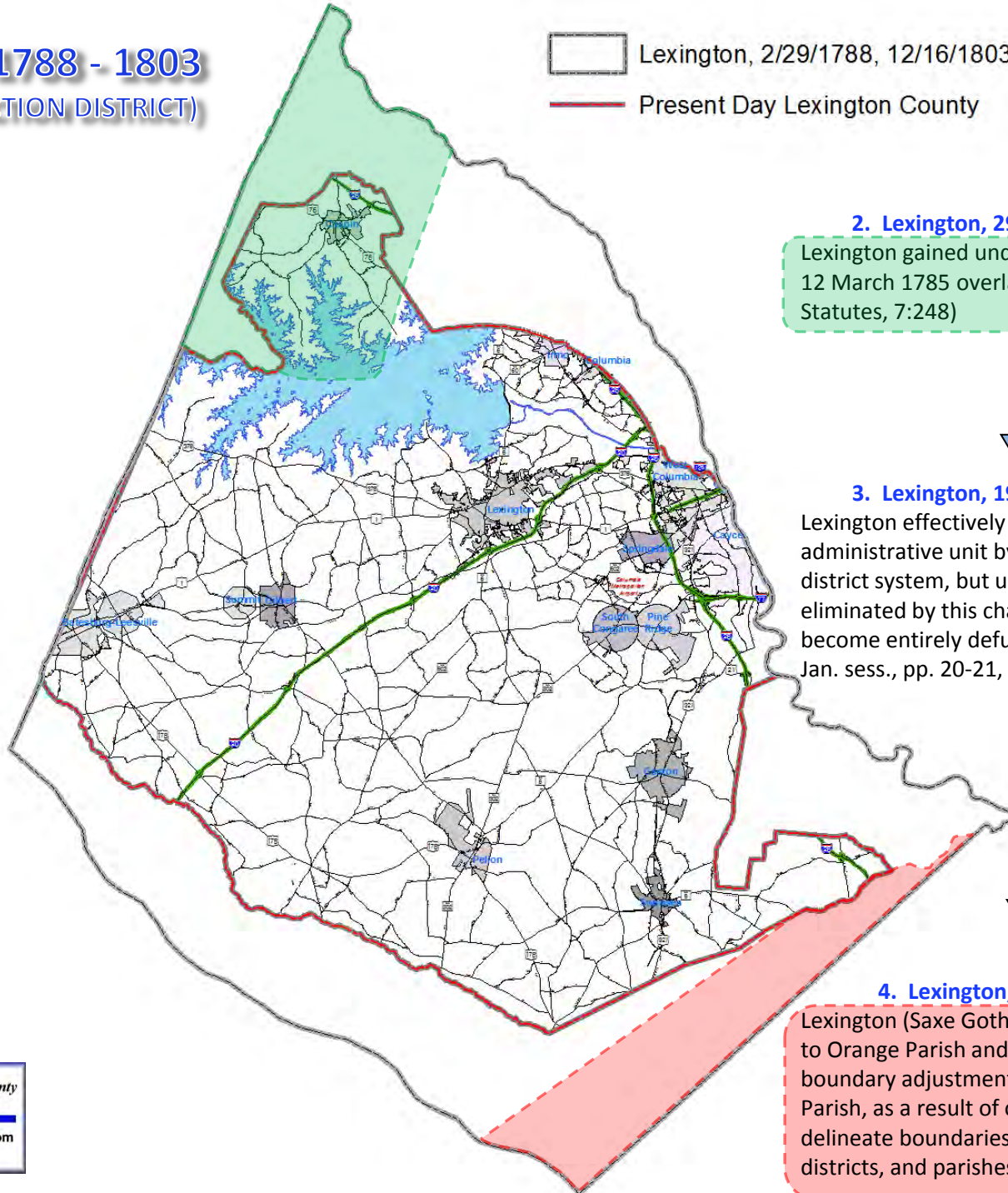
BACK TO INDEX

NEXT →

LEXINGTON 1788 - 1803

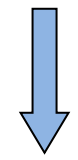
(SAXE GOTHA ELECTION DISTRICT)

Lexington, 2/29/1788, 12/16/1803
Present Day Lexington County



2. Lexington, 29th February, 1788

Lexington gained undisputed jurisdiction of 12 March 1785 overlap with Newberry. (S.C. Statutes, 7:248)



3. Lexington, 19th February, 1791

Lexington effectively eliminated as county administrative unit by reform of judicial district system, but unlike the other counties eliminated by this change Lexington did not become entirely defunct. (S.C. Acts 1791, Jan. sess., pp. 20-21, 28-29)





4. Lexington, 17th Dec, 1803

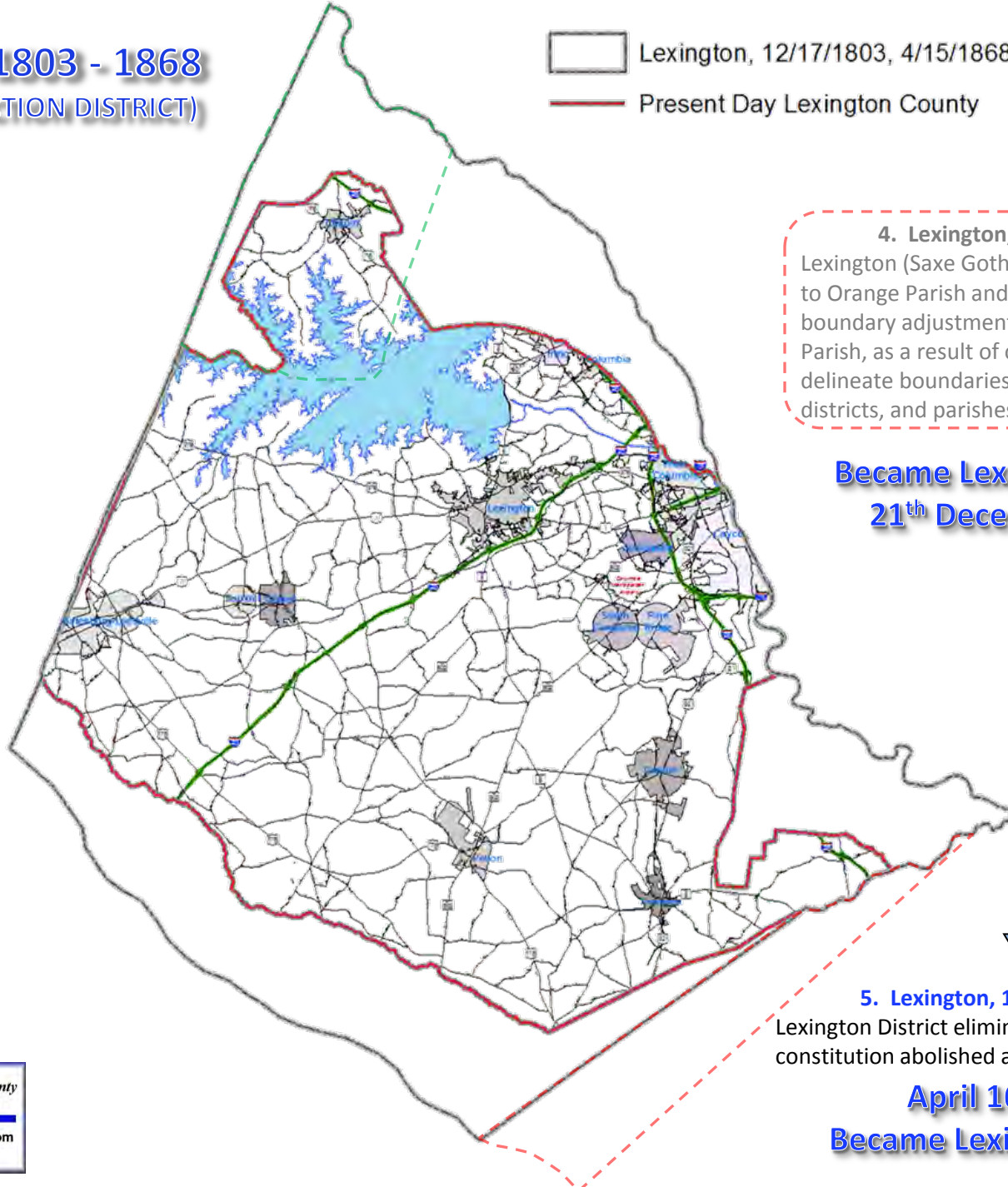
Lexington (Saxe Gotha Election District) lost to Orange Parish and lost territory in boundary adjustment with St. Matthew Parish, as a result of omnibus act to delineate boundaries of counties, election districts, and parishes. (S.C. Acts 1803, p. 38)



LEXINGTON 1803 - 1868

(SAXE GOTHA ELECTION DISTRICT)

 Lexington, 12/17/1803, 4/15/1868
 Present Day Lexington County



4. Lexington, 17th Dec, 1803
Lexington (Saxe Gotha Election District) lost to Orange Parish and lost territory in boundary adjustment with St. Matthew Parish, as a result of omnibus act to delineate boundaries of counties, election districts, and parishes. (S.C. Acts 1803, p. 38)

**Became Lexington District
21th December, 1804**

BACK TO INDEX

NEXT

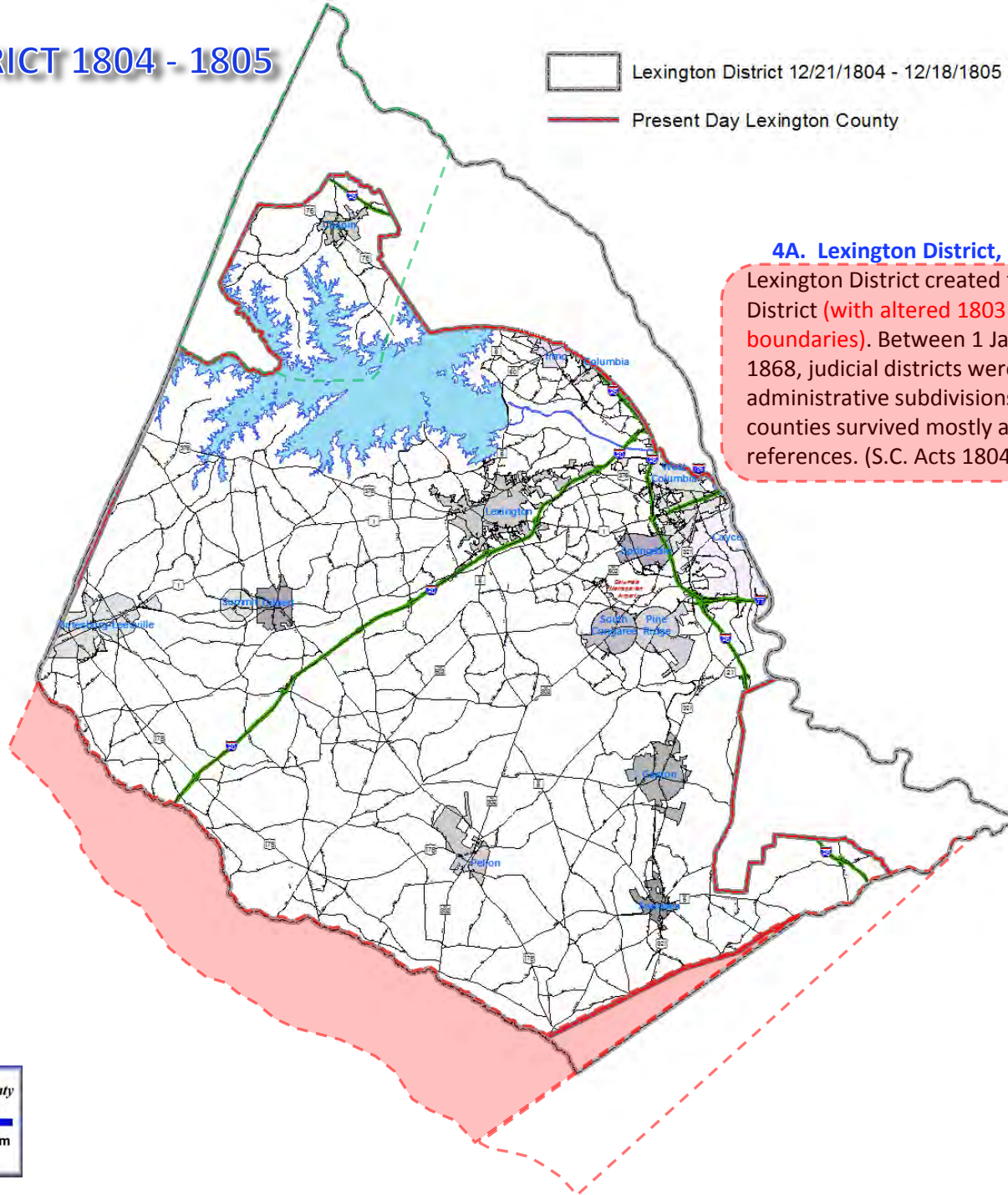
5. Lexington, 16th April, 1868
Lexington District eliminated when new state constitution abolished all judicial districts.

April 16th, 1868
Became Lexington County

BACK

LEXINGTON DISTRICT 1804 - 1805

Lexington District 12/21/1804 - 12/18/1805
Present Day Lexington County



4A. Lexington District, 21st December, 1804

Lexington District created from Orangeburg District (with altered 1803 Lexington County boundaries). Between 1 January 1800 and 16 April 1868, judicial districts were the principal administrative subdivisions of the state, while counties survived mostly as geographical references. (S.C. Acts 1804, Nov. sess., p. 16)

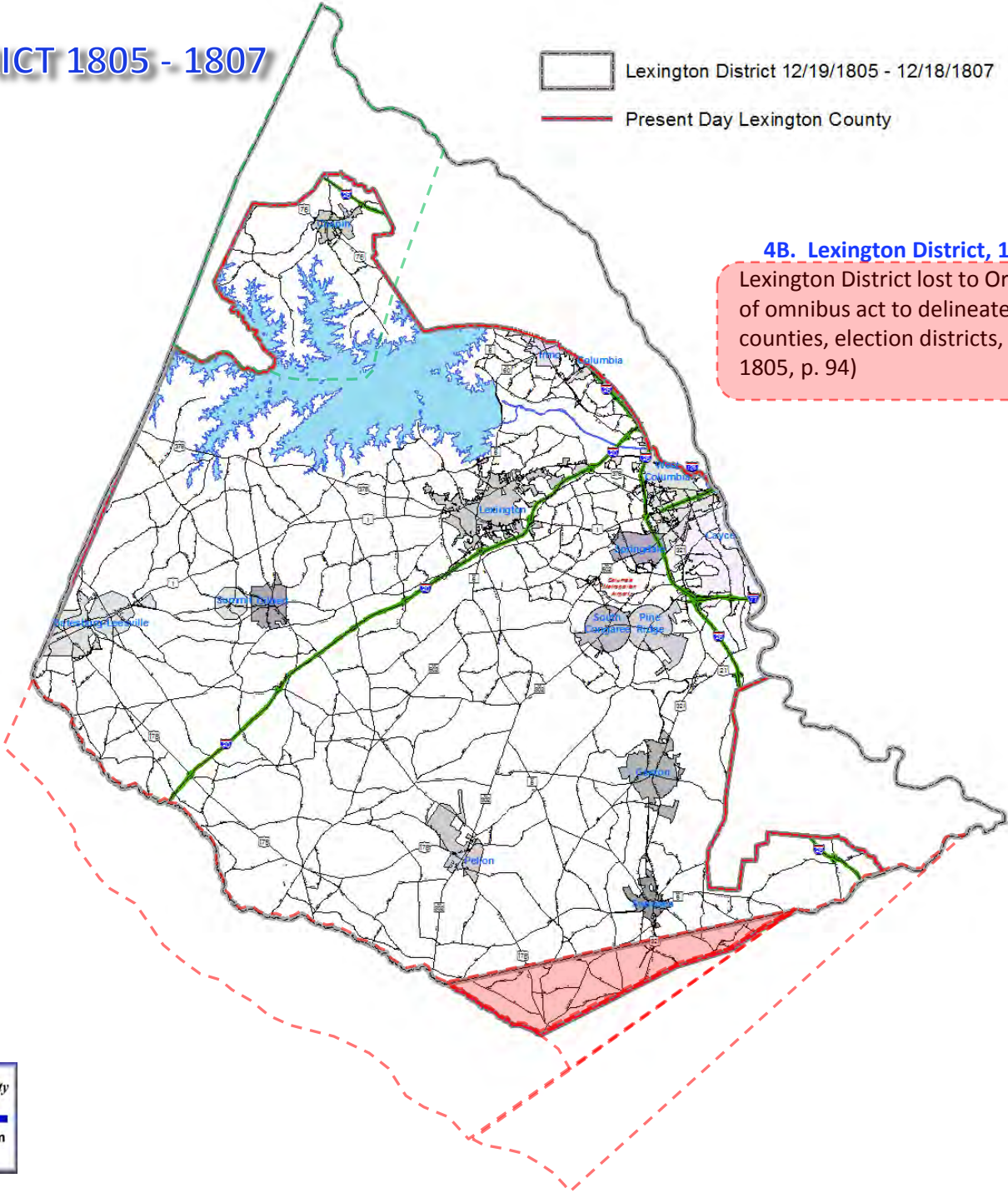
BACK

BACK TO INDEX

NEXT

LEXINGTON DISTRICT 1805 - 1807

Lexington District 12/19/1805 - 12/18/1807
Present Day Lexington County



4B. Lexington District, 19th December, 1805
Lexington District lost to Orange Parish, as a result of omnibus act to delineate boundaries of counties, election districts, and parishes. (S.C. Acts 1805, p. 94)

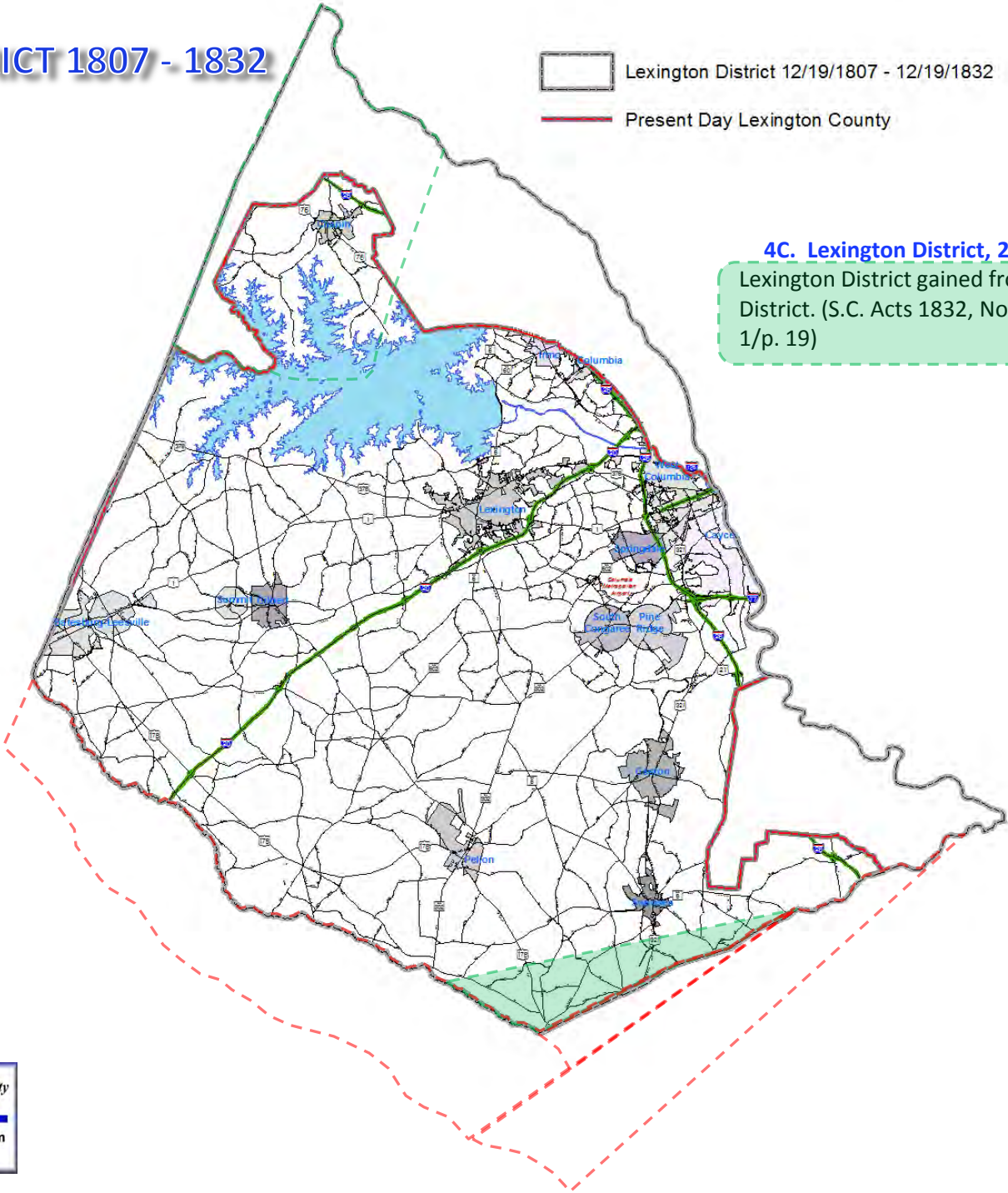
← BACK

BACK TO INDEX

NEXT →

LEXINGTON DISTRICT 1807 - 1832

Lexington District 12/19/1807 - 12/19/1832
Present Day Lexington County



4C. Lexington District, 20th December, 1832
Lexington District gained from Orangeburg District. (S.C. Acts 1832, Nov. sess., ch. 15, sec. 1/p. 19)

← BACK

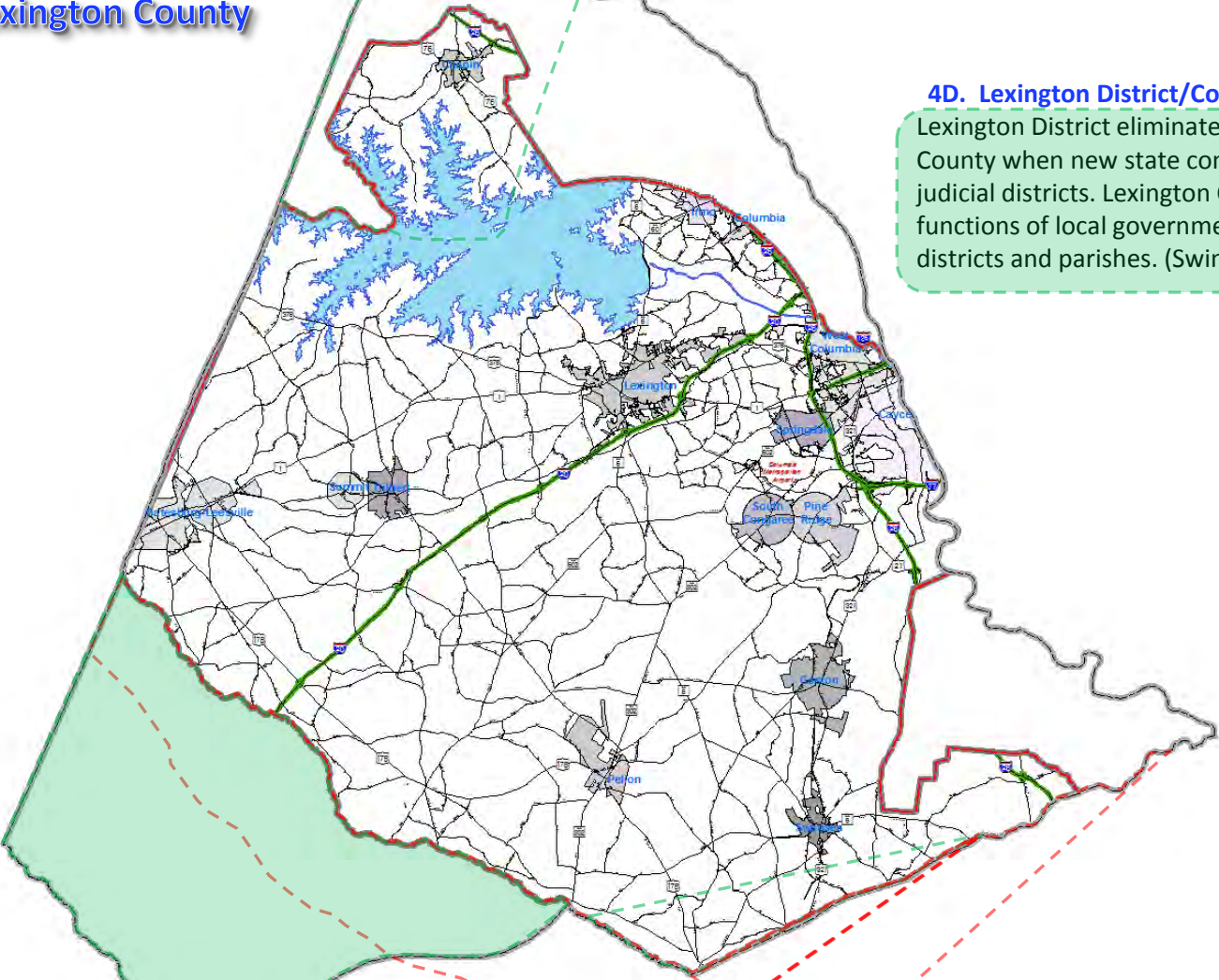
BACK TO INDEX

NEXT →

LEXINGTON DISTRICT 1832 - 1868

16 APRIL 1868
Became Lexington County

Lexington District 12/20/1832 - 4/15/1868
Present Day Lexington County



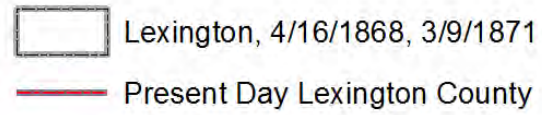
4D. Lexington District/County, 16th April, 1868
Lexington District eliminated, became Lexington County when new state constitution abolished all judicial districts. Lexington County assumed all functions of local government from both judicial districts and parishes. (Swindler, 8:497)

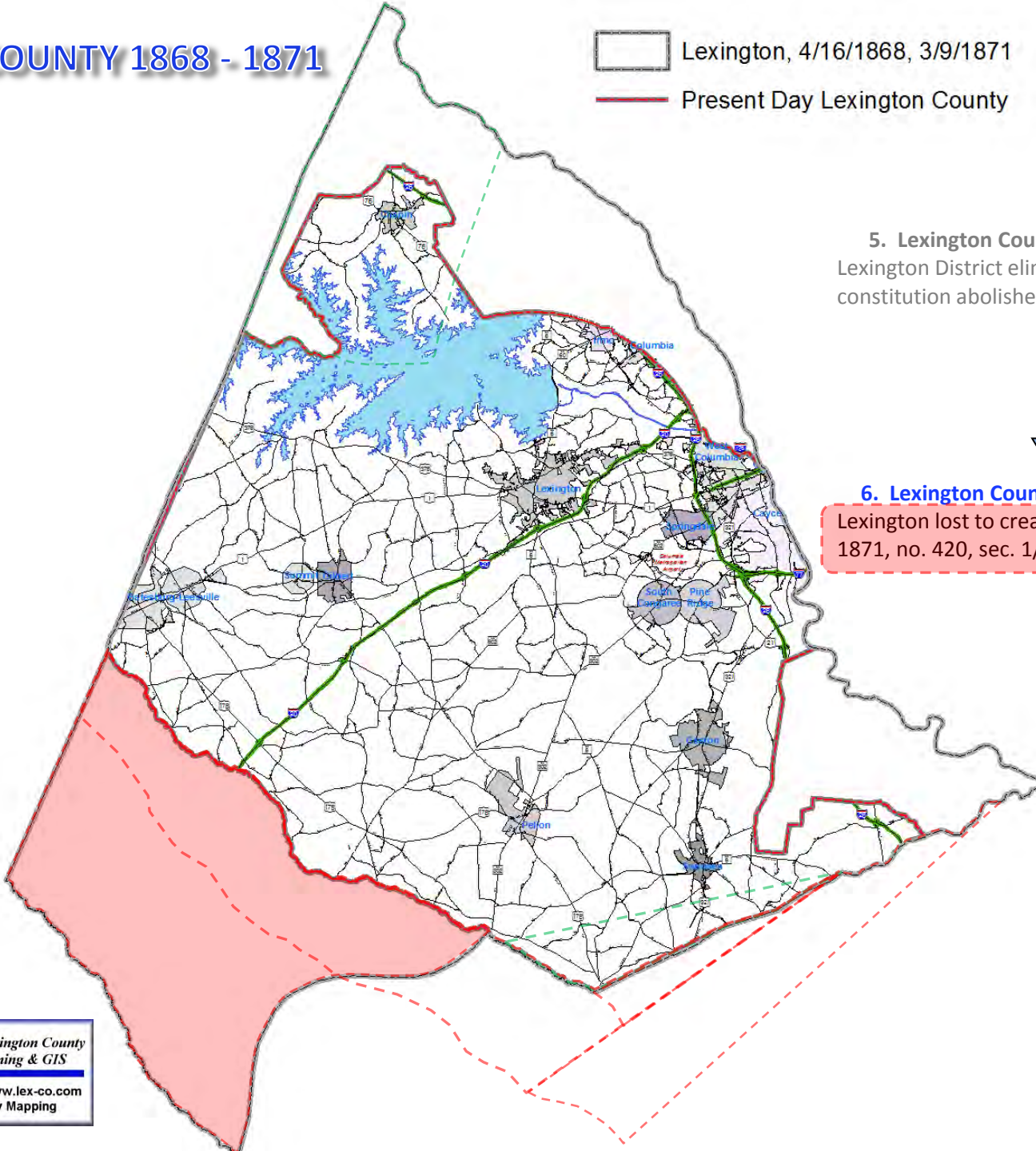
← BACK

BACK TO INDEX

NEXT →

LEXINGTON COUNTY 1868 - 1871

 Lexington, 4/16/1868, 3/9/1871
Present Day Lexington County




5. Lexington County, 16th April, 1868
Lexington District eliminated when new state constitution abolished all judicial districts.




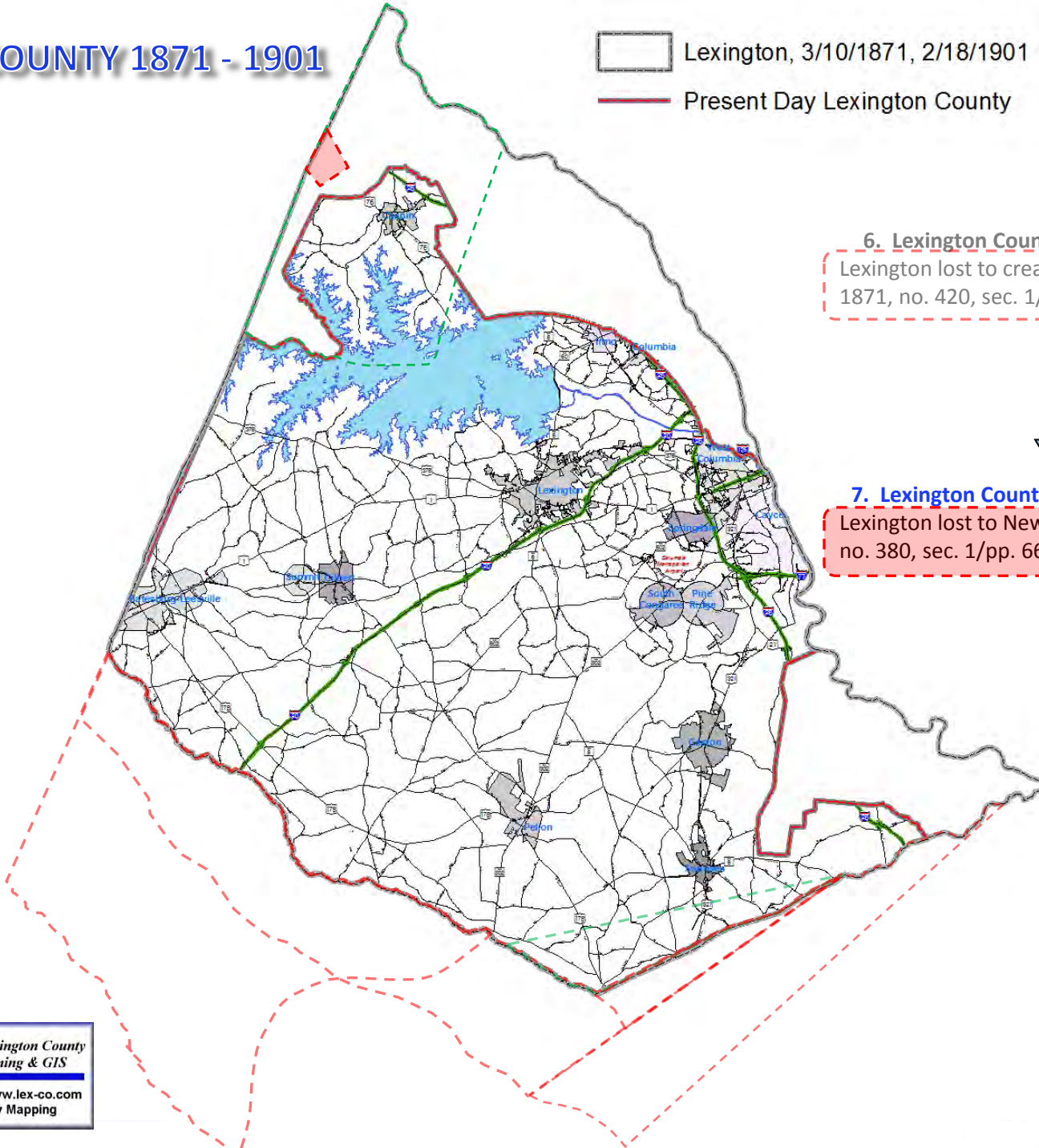
6. Lexington County, 10th March, 1871
Lexington lost to creation of Aiken. (S.C. Acts 1871, no. 420, sec. 1/p. 695)



LEXINGTON COUNTY 1871 - 1901

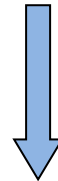
 Lexington, 3/10/1871, 2/18/1901

 Present Day Lexington County



6. Lexington County, 10th March, 1871

Lexington lost to creation of Aiken. (S.C. Acts 1871, no. 420, sec. 1/p. 695)



7. Lexington County, 19th February, 1901

Lexington lost to Newberry. (S.C. Acts 1901, no. 380, sec. 1/pp. 661-662)

← BACK

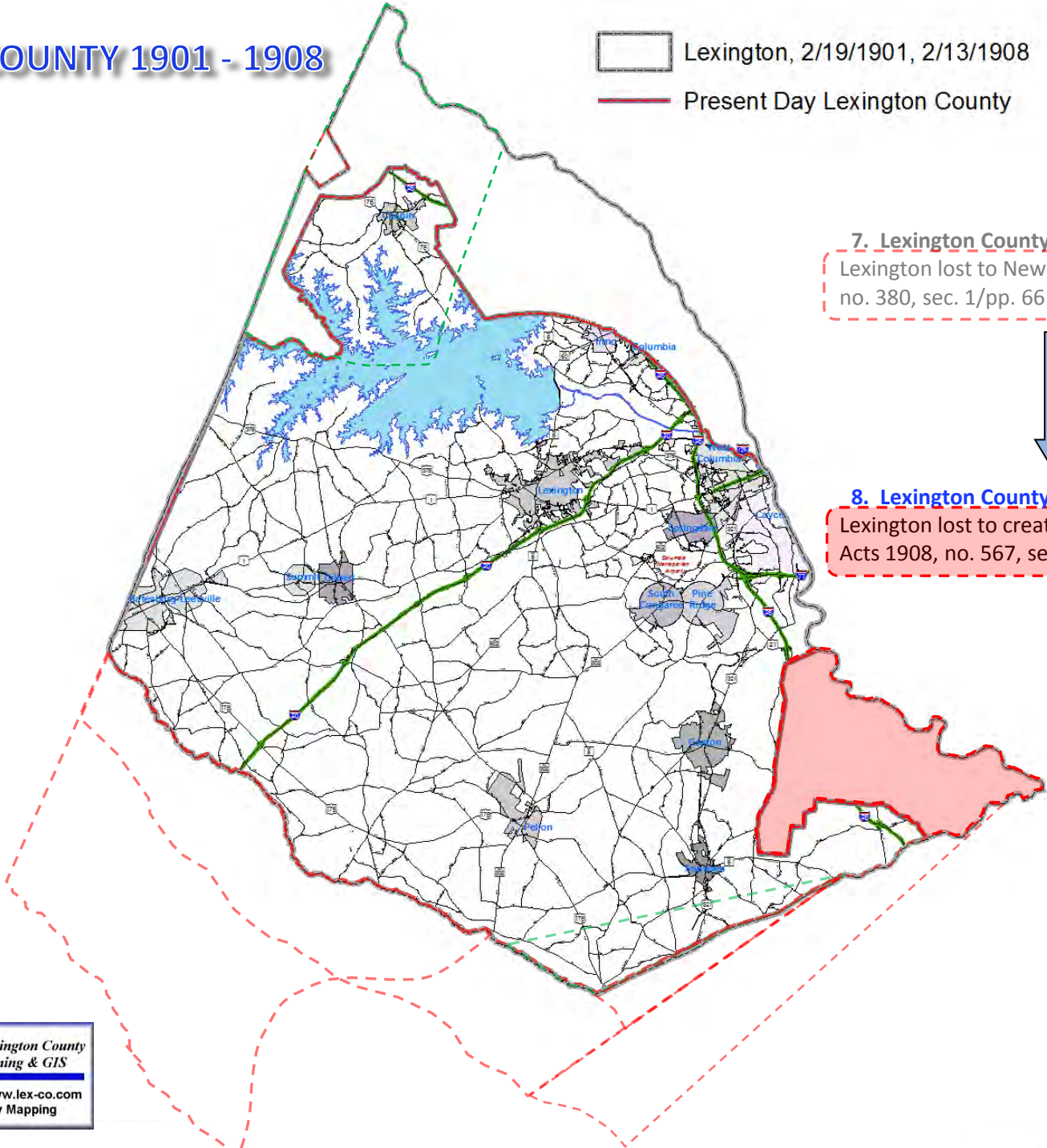
BACK TO INDEX

NEXT →

LEXINGTON COUNTY 1901 - 1908

Lexington, 2/19/1901, 2/13/1908

Present Day Lexington County



7. Lexington County, 19th February, 1901
Lexington lost to Newberry. (S.C. Acts 1901, no. 380, sec. 1/pp. 661-662)

8. Lexington County, 14th February, 1908
Lexington lost to creation of Calhoun. (S.C. Acts 1908, no. 567, sec. 1/pp. 1279-1281)

← BACK

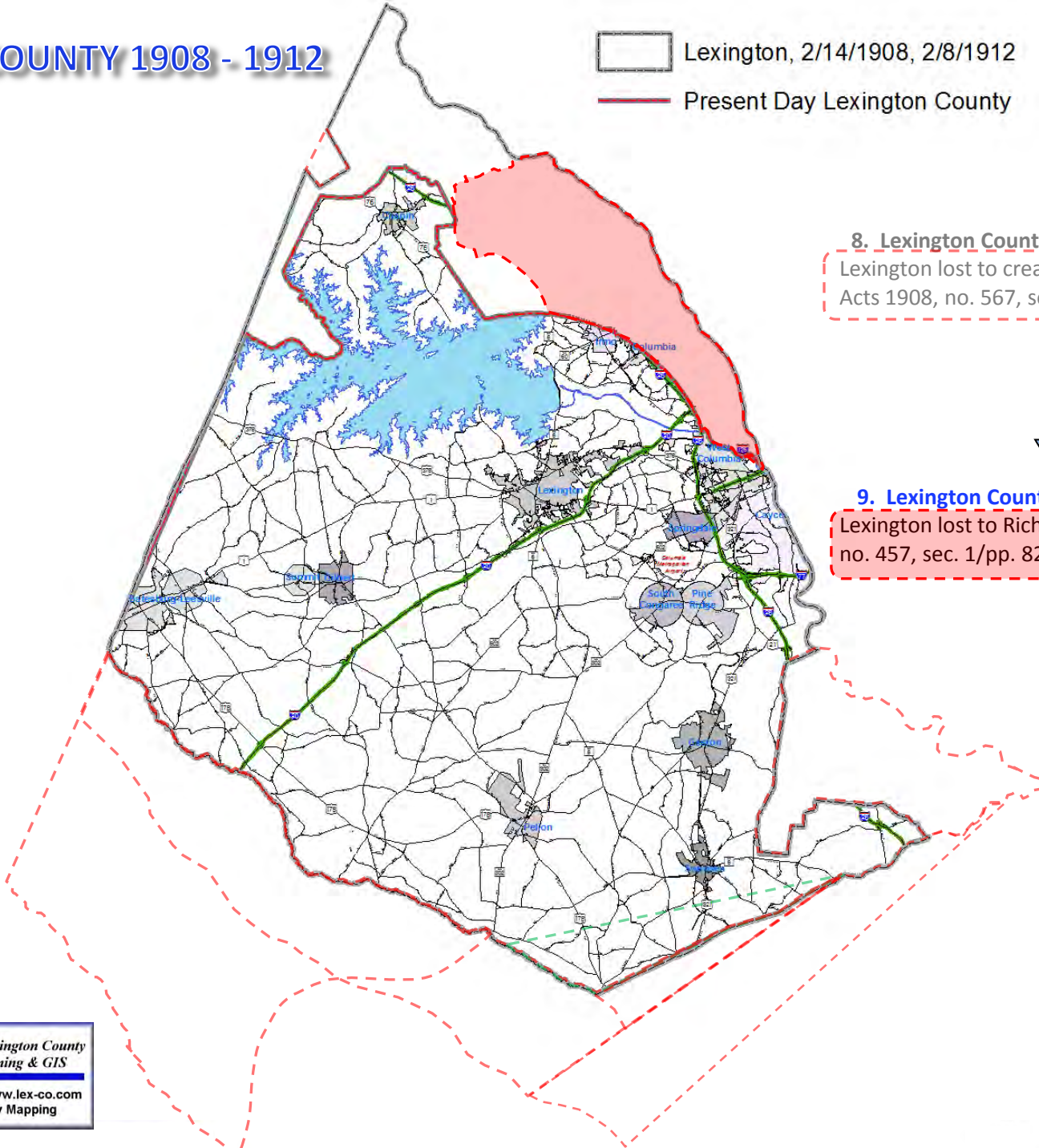
BACK TO INDEX

NEXT →

LEXINGTON COUNTY 1908 - 1912

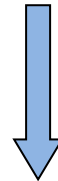
Lexington, 2/14/1908, 2/8/1912

Present Day Lexington County



8. Lexington County, 14th February, 1908

Lexington lost to creation of Calhoun. (S.C. Acts 1908, no. 567, sec. 1/pp. 1279-1281)



9. Lexington County, 9th February, 1912


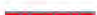
Lexington lost to Richland. (S.C. Acts 1912, no. 457, sec. 1/pp. 821-823)

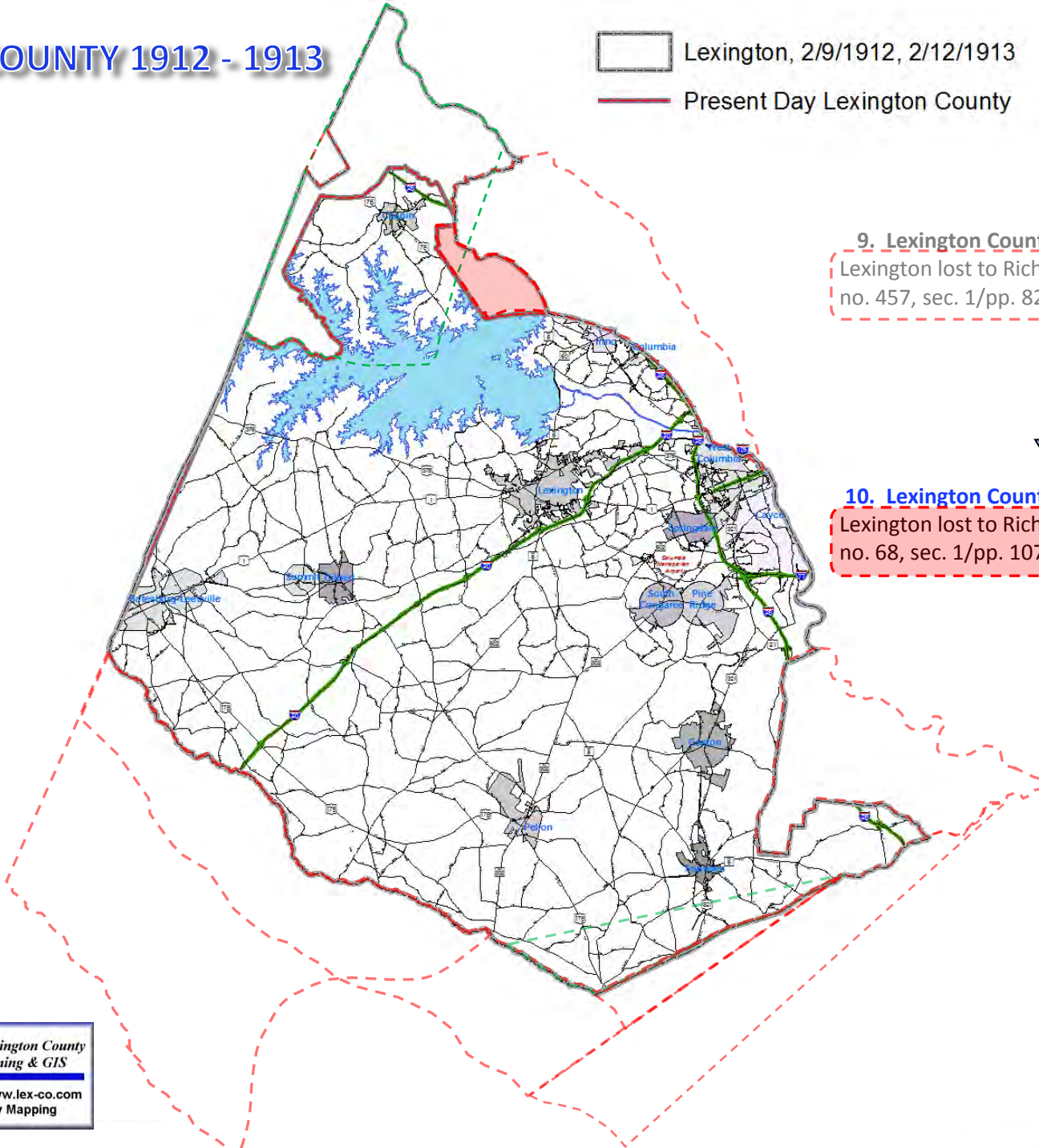
BACK

BACK TO INDEX

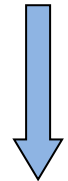
NEXT

LEXINGTON COUNTY 1912 - 1913

 Lexington, 2/9/1912, 2/12/1913
 Present Day Lexington County



9. Lexington County, 9th February, 1912
Lexington lost to Richland. (S.C. Acts 1912, no. 457, sec. 1/pp. 821-823)



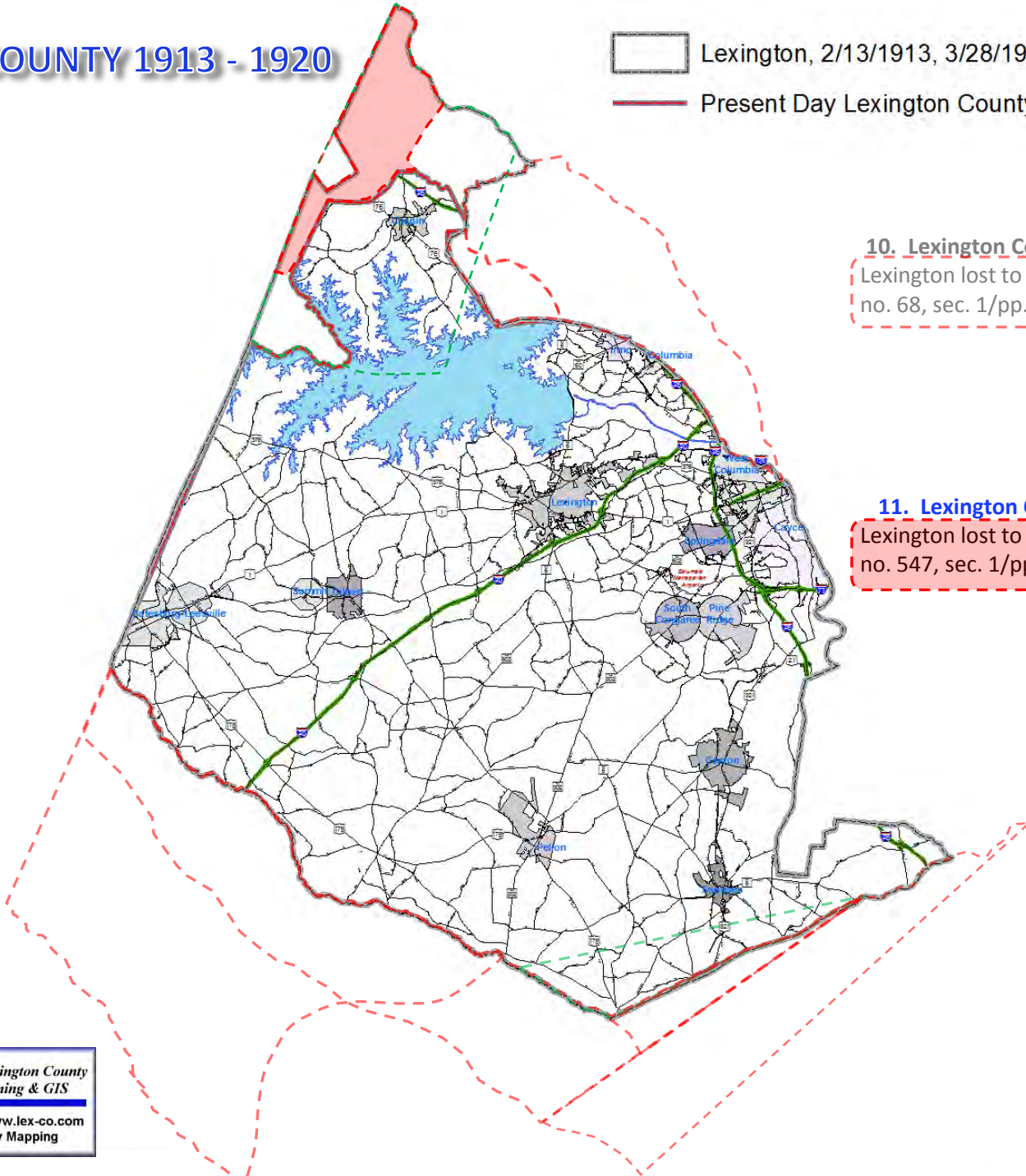
10. Lexington County, 13th February, 1913
Lexington lost to Richland. (S.C. Acts 1913, no. 68, sec. 1/pp. 107-108)



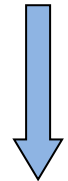
LEXINGTON COUNTY 1913 - 1920

Lexington, 2/13/1913, 3/28/1920

Present Day Lexington County




10. Lexington County, 13th February, 1913
Lexington lost to Richland. (S.C. Acts 1913, no. 68, sec. 1/pp. 107-108)




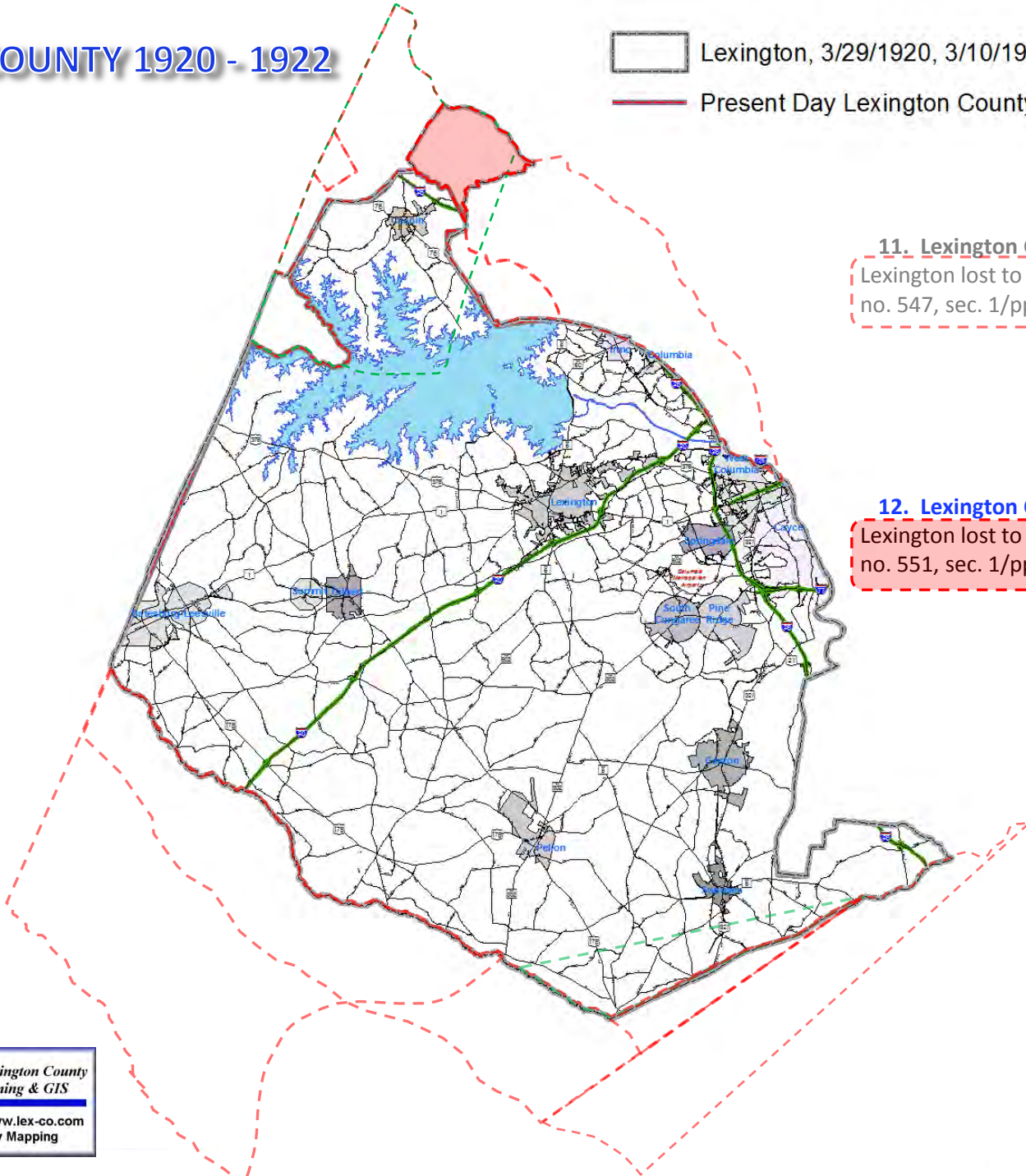
11. Lexington County, 29th March, 1920
Lexington lost to Newberry. (S.C. Acts 1920, no. 547, sec. 1/pp. 976-978)



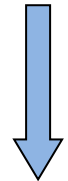
LEXINGTON COUNTY 1920 - 1922

 Lexington, 3/29/1920, 3/10/1922

 Present Day Lexington County




11. Lexington County, 29th March, 1920
Lexington lost to Newberry. (S.C. Acts 1920, no. 547, sec. 1/pp. 976-978)




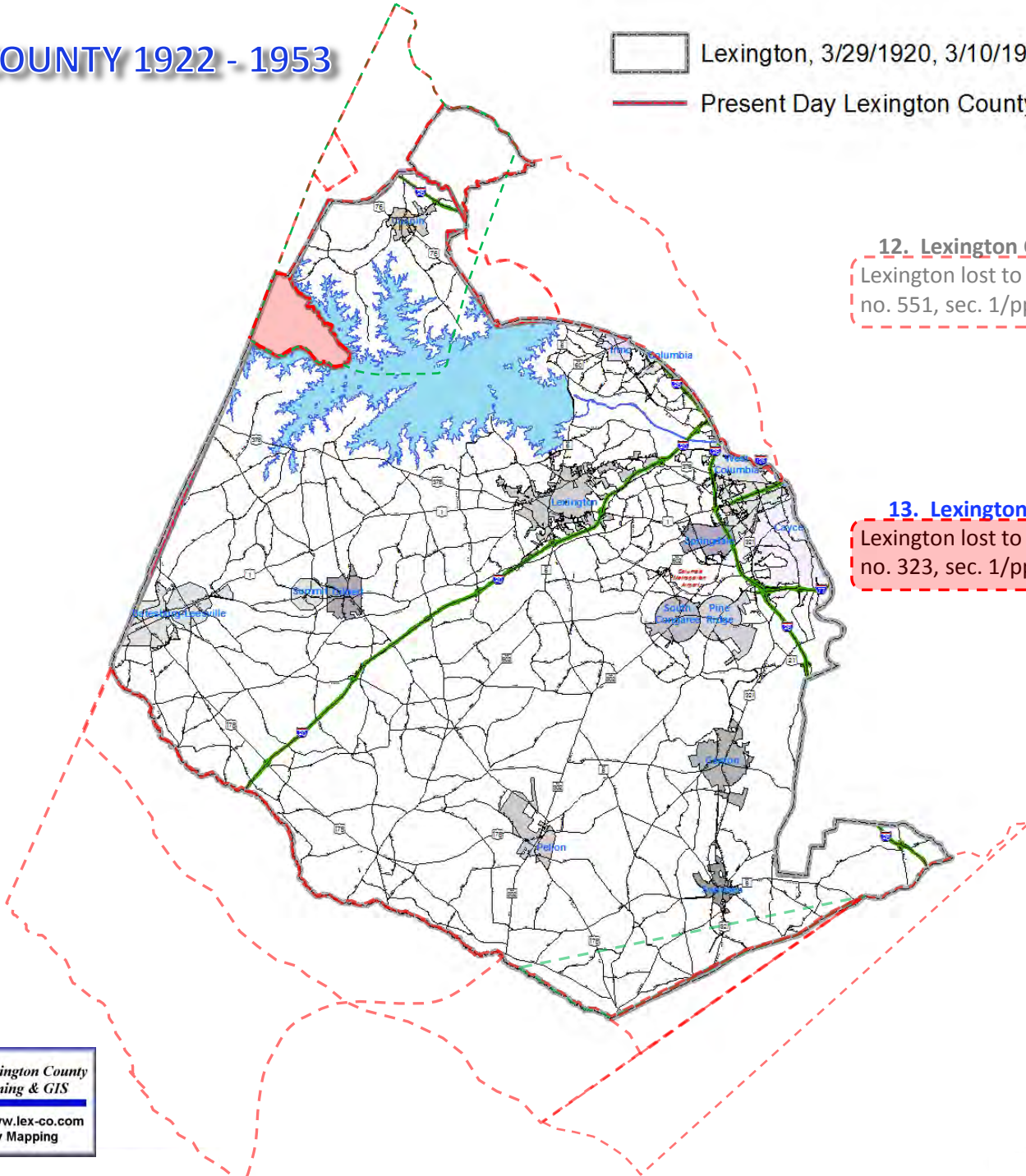
12. Lexington County, 11th March, 1922
Lexington lost to Richland. (S.C. Acts 1922, no. 551, sec. 1/pp. 977-978)



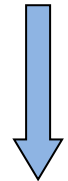
LEXINGTON COUNTY 1922 - 1953

 Lexington, 3/29/1920, 3/10/1922

 Present Day Lexington County




12. Lexington County, 11th March, 1922
Lexington lost to Richland. (S.C. Acts 1922, no. 551, sec. 1/pp. 977-978)




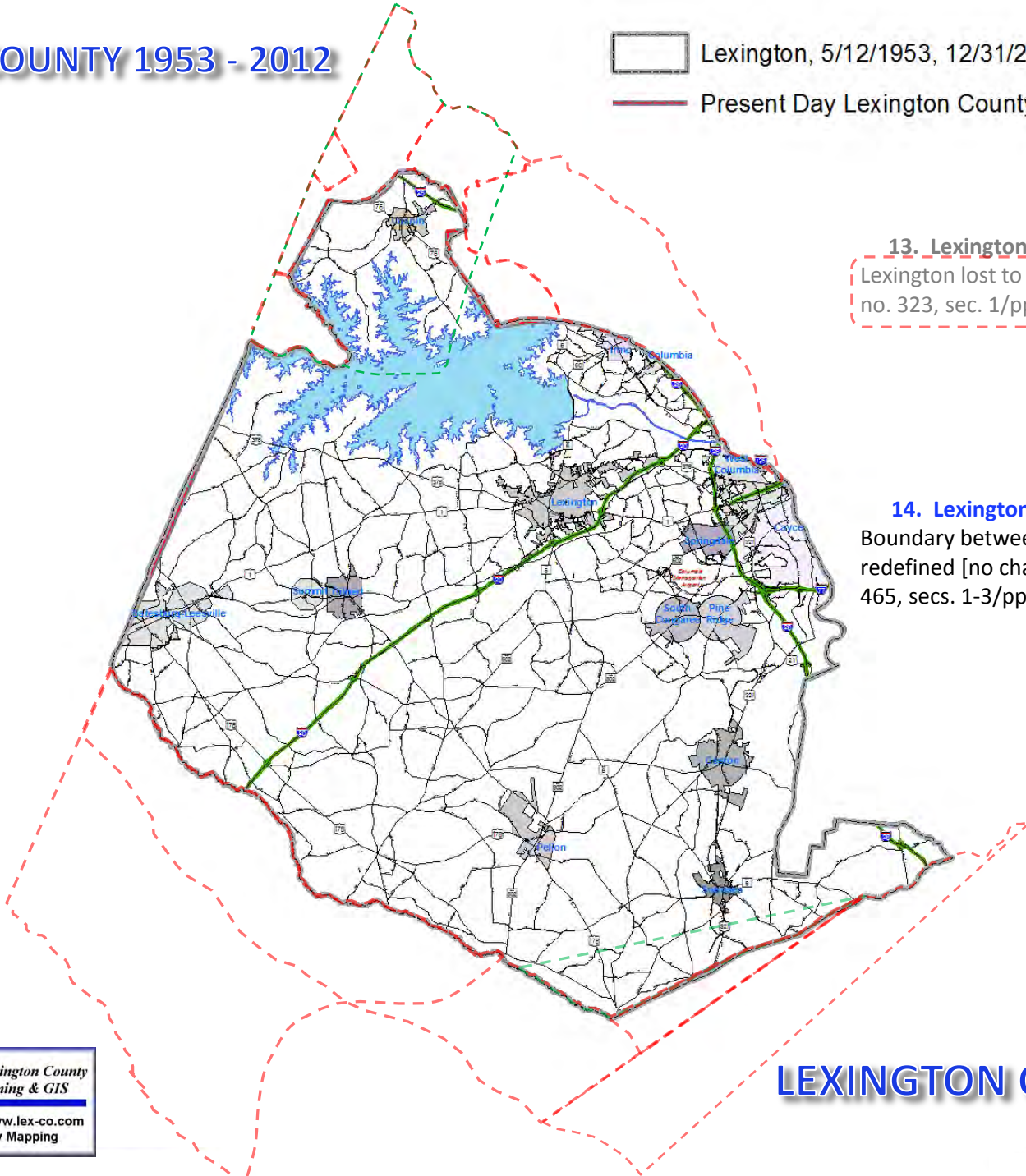
13. Lexington County, 12th May, 1953
Lexington lost to Newberry. (S.C. Acts 1953, no. 323, sec. 1/pp. 416-417)



LEXINGTON COUNTY 1953 - 2012

 Lexington, 5/12/1953, 12/31/2012

 Present Day Lexington County



13. Lexington County, 12th May, 1953
Lexington lost to Newberry. (S.C. Acts 1953, no. 323, sec. 1/pp. 416-417)

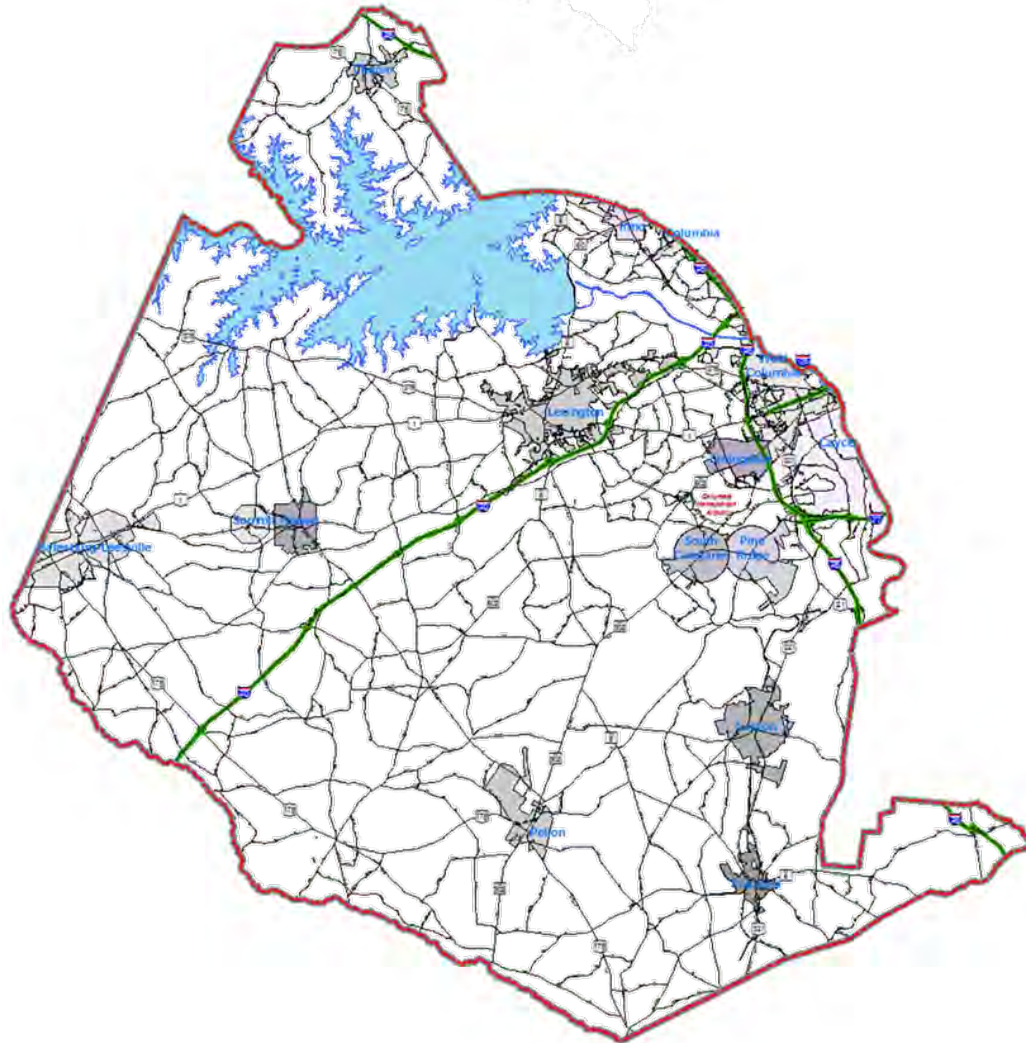
14. Lexington County, 14th July, 1969
Boundary between Lexington and Richland redefined [no change]. (S.C. Acts 1969, no. 465, secs. 1-3/pp. 819-822)

← BACK

BACK TO INDEX

NEXT →

LEXINGTON COUNTY 2012



← BACK

BACK TO INDEX

START OVER

Historic Map Resources

<http://archives.sc.gov/sccountymaps/Pages/default.aspx>

http://publications.newberry.org/ahcbp/statepages/South_Carolina.html

<http://publications.newberry.org/ahcbp/downloadfiles.html>

<http://randymajors.com/p/maps.html>

<http://www.davidrumsey.com>

<http://www.sciway.net/hist/maps/>