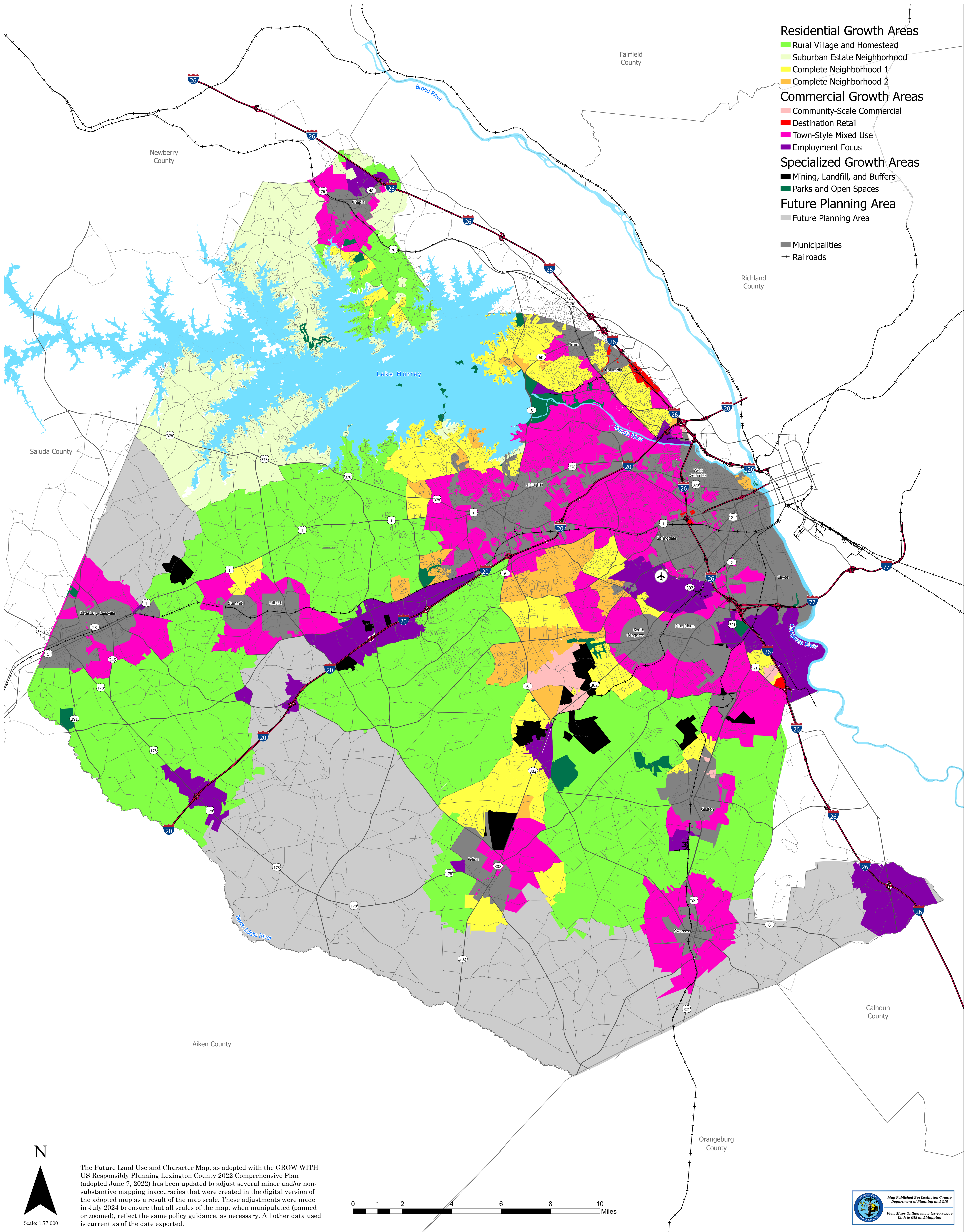
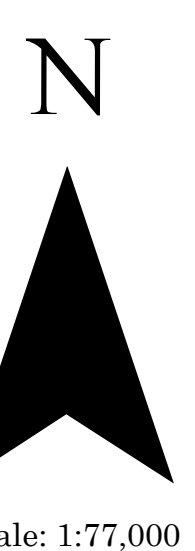


Future Land Use and Character

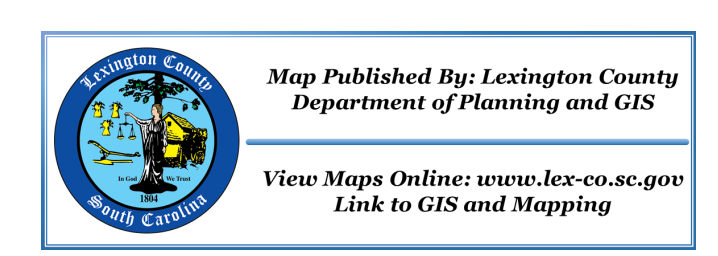
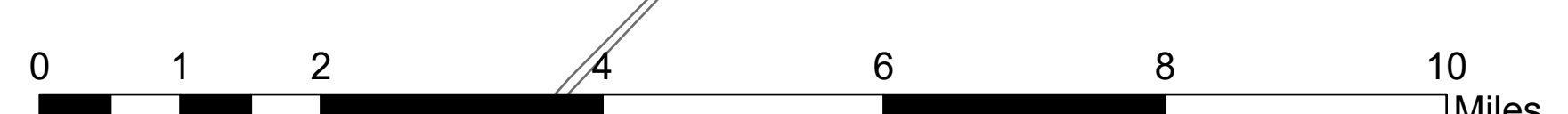


- Residential Growth Areas**
- Rural Village and Homestead
 - Suburban Estate Neighborhood
 - Complete Neighborhood 1
 - Complete Neighborhood 2
- Commercial Growth Areas**
- Community-Scale Commercial
 - Destination Retail
 - Town-Style Mixed Use
 - Employment Focus
- Specialized Growth Areas**
- Mining, Landfill, and Buffers
 - Parks and Open Spaces
- Future Planning Area**
- Future Planning Area
- Legend**
- Municipalities
 - + Railroads



Scale: 1:77,000

The Future Land Use and Character Map, as adopted with the GROW WITH US Responsibly Planning Lexington County 2022 Comprehensive Plan (adopted June 7, 2022) has been updated to adjust several minor and/or non-substantive mapping inaccuracies that were created in the digital version of the adopted map as a result of the map scale. These adjustments were made in July 2024 to ensure that all scales of the map, when manipulated (panned or zoomed), reflect the same policy guidance, as necessary. All other data used is current as of the date exported.



Lexington County shall assume no liability for any errors, omissions, or inaccuracies in the information provided regardless of how caused, or any decision made or action taken or not taken by any person in reliance upon any information or data furnished hereunder. For a complete copy of the Lexington County data disclaimer please visit our webpage at www.lex-co.sc.gov.